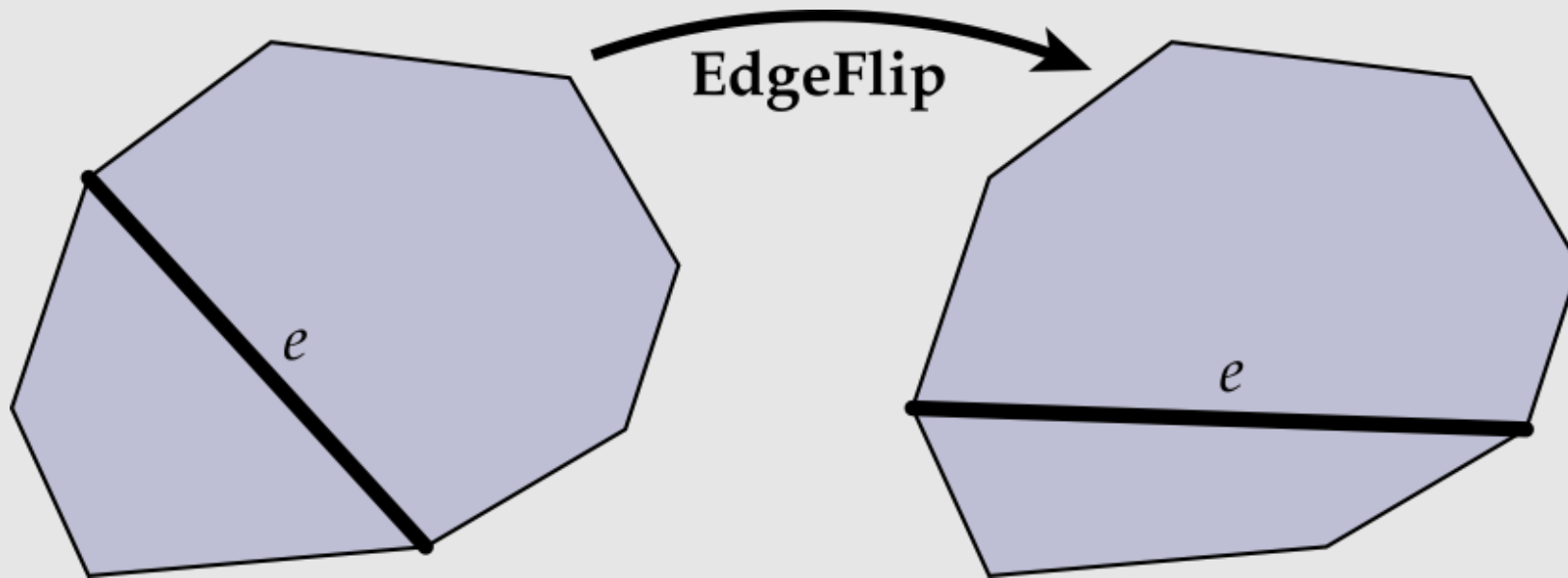


Digital Geometric Processing

- Local Operations
- Good Geometry
- Geometric Subdivision
- Geometric Simplification
- Geometric Remeshing
- Geometric Queries

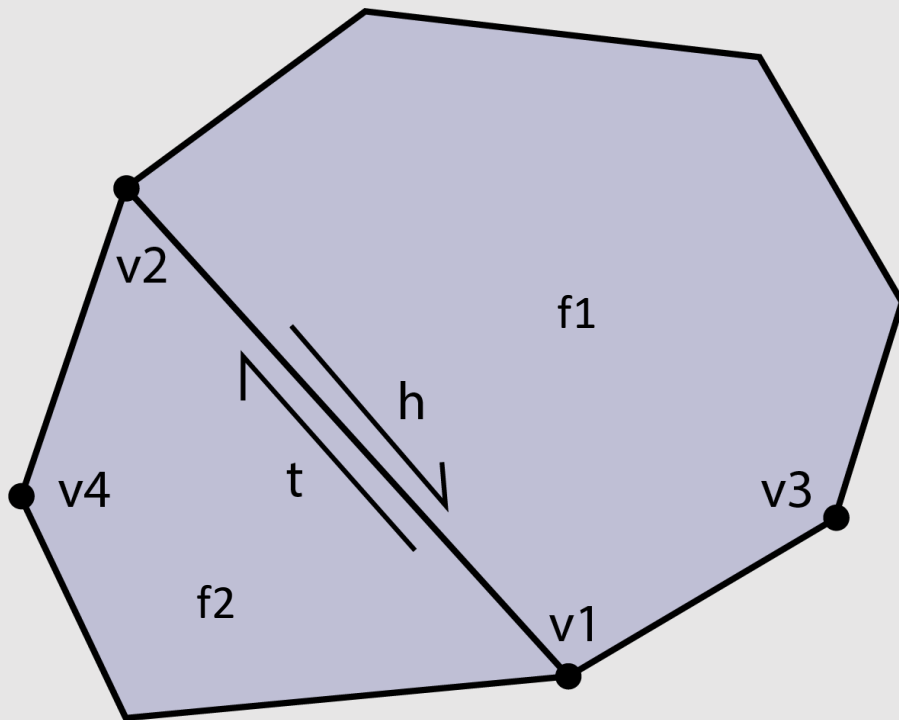
Edge Flip

Goal: Move edge e around faces adjacent to it:



- No elements created/destroyed, just pointer reassignment
- Flipping the same edge multiple times yields original results

Edge Flip



```
// collect
h = e->halfedge;
t = h->twin;
v1 = h->next->vertex;
v2 = t->next->vertex;
v3 = h->next->next->vertex;
v4 = t->next->next->vertex;
f1 = h->face;
f2 = t->face;

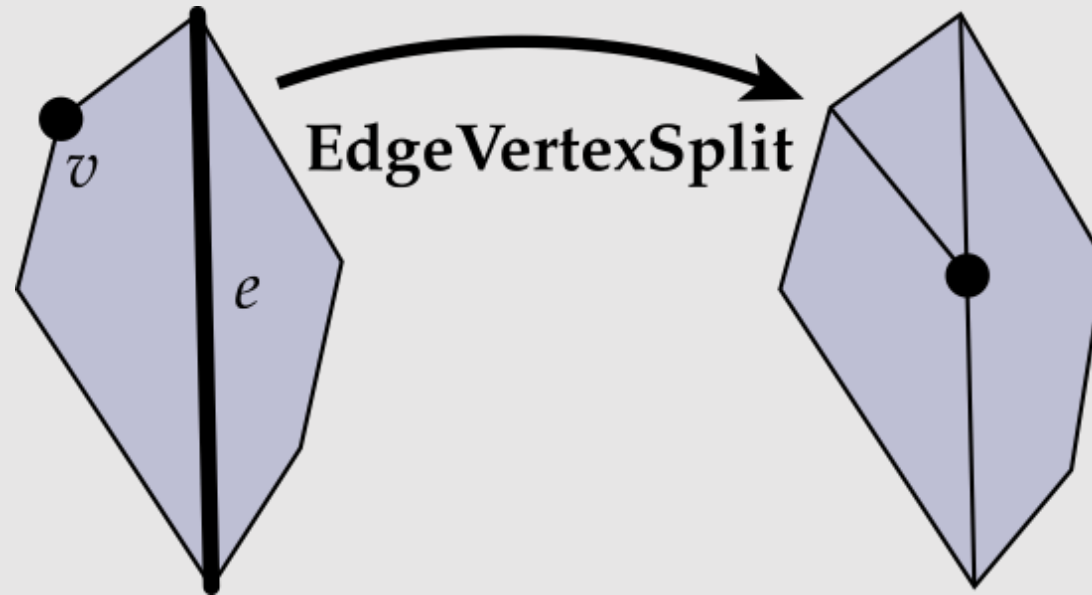
// disconnect
v1->halfedge = h->next;
v2->halfedge = t->next;
f1->halfedge = h;
f2->halfedge = t;

// connect
t->vertex = v3;
h->vertex = v4;

// are we done?   What is missing?
```

Edge Vertex Split

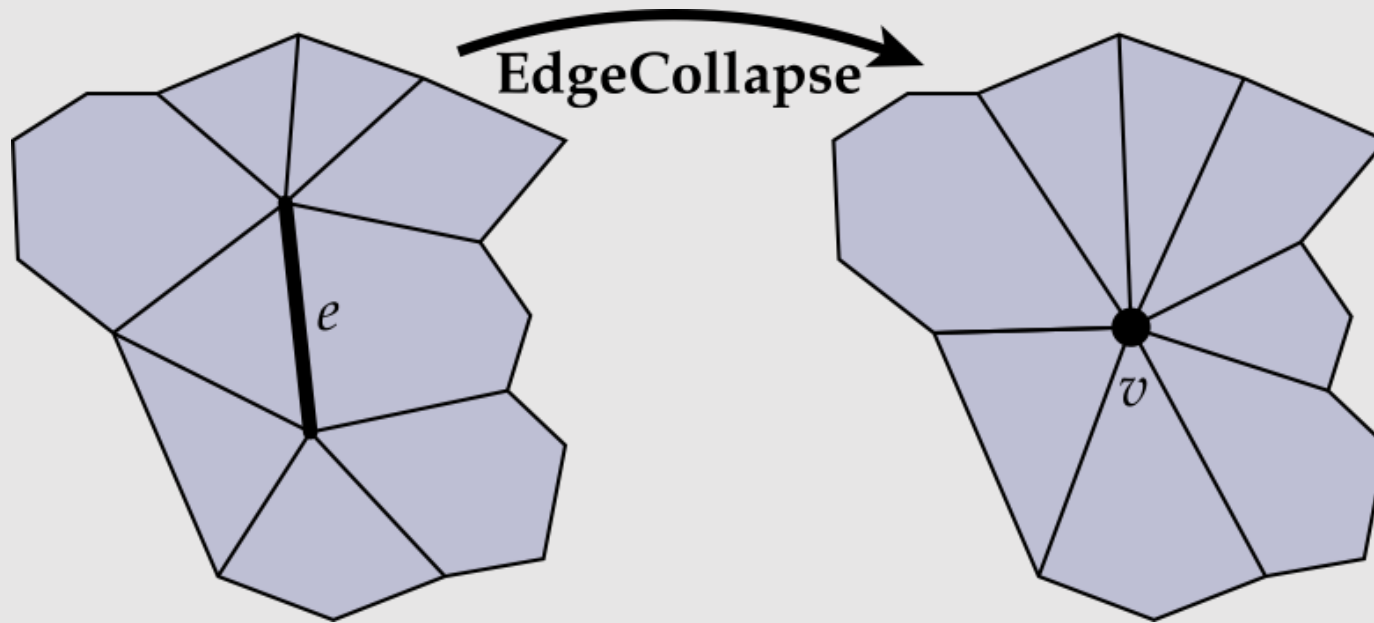
Goal: Insert edge between vertex v and midpoint of edge e :



- Creates a new vertex, new edge, and new face
- Involves much more pointer reassignments

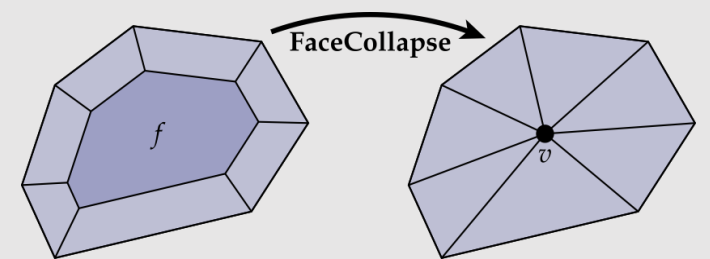
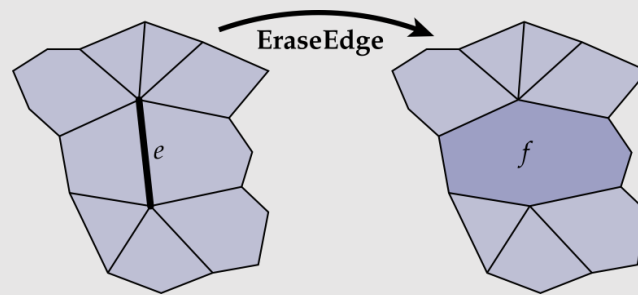
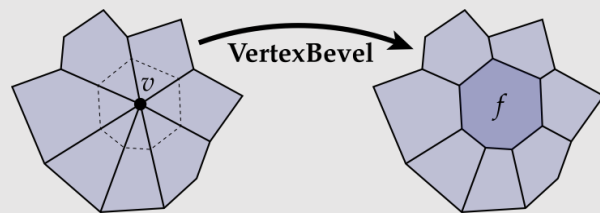
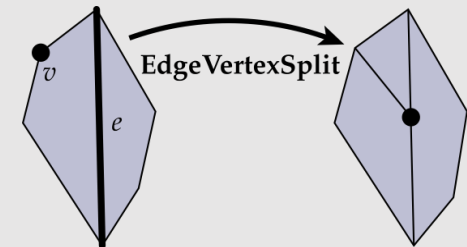
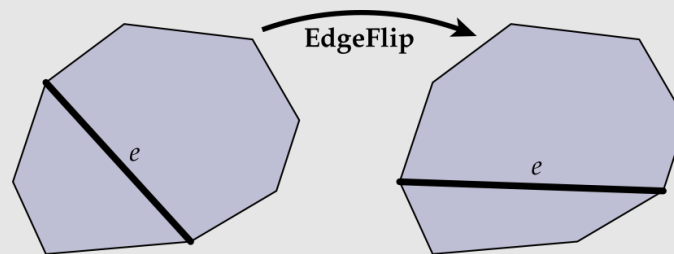
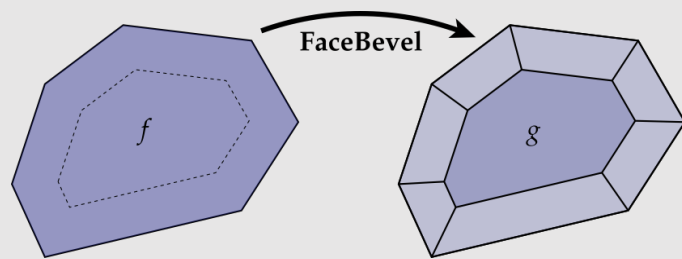
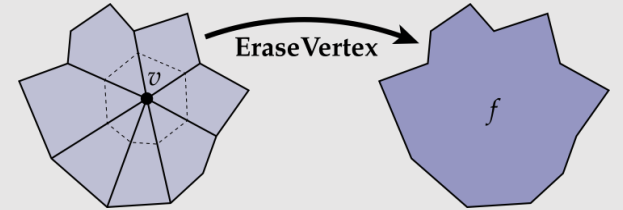
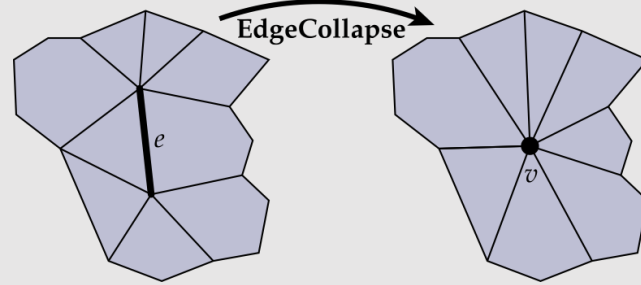
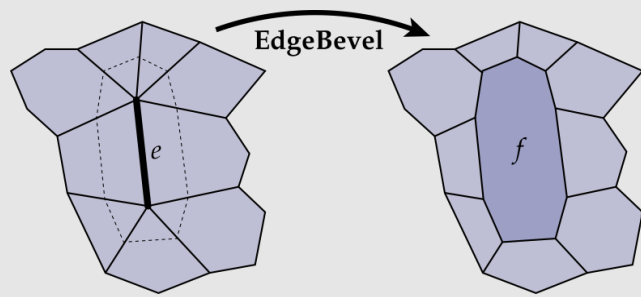
Edge Collapse

Goal: Replace edge (c,d) with a single vertex m:



- Deletes a vertex, (up to) 3 edges, and (up to) 2 faces
 - Depends on the degree of the original faces

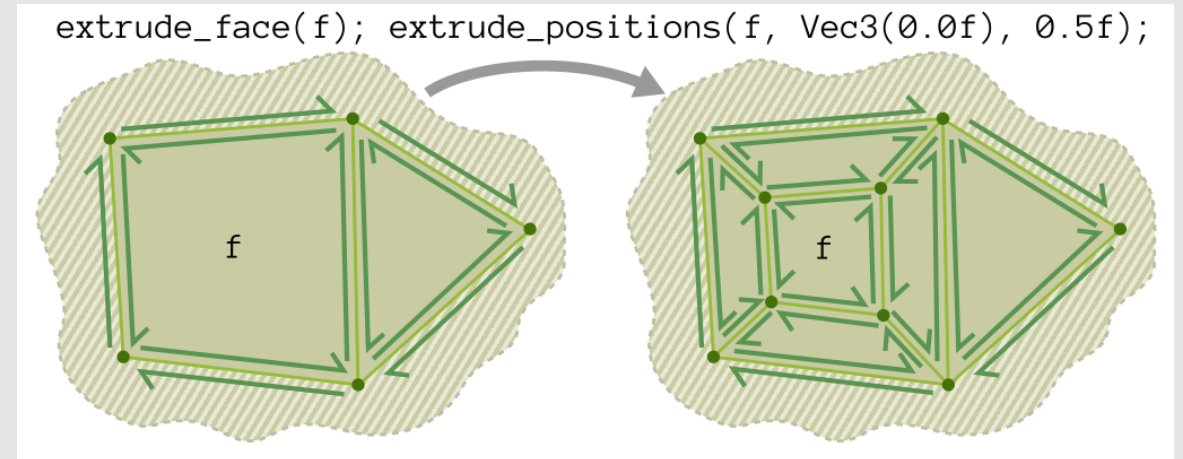
Local Operations



Many other local operations you will explore in your homework...

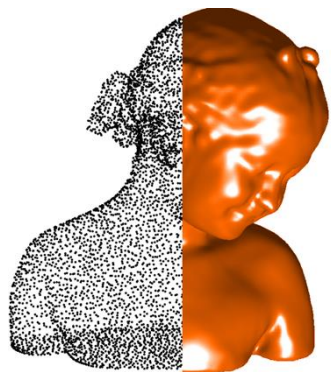
Local Operation Tips

- Always draw out a diagram
 - We've given you some unlabeled diagrams
 - With pen + paper, label the elements you'll need to collect/create
- Stage your code in the following way:
 - Create
 - Collect
 - Disconnect
 - Connect
 - Delete
- Write asserts around your code
 - Check if elements that should be deleted were deleted
 - Make sure there are no dangling references to anything that has been deleted
 - Make sure every element that you disconnected or reconnected is still valid
 - What it means for a vertex to be valid is not the same as what it means for an edge to be valid, etc.

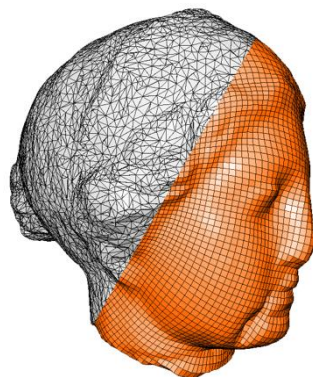


- **Good Geometry**
- Geometric Subdivision
- Geometric Simplification
- Geometric Remeshing
- Geometric Queries

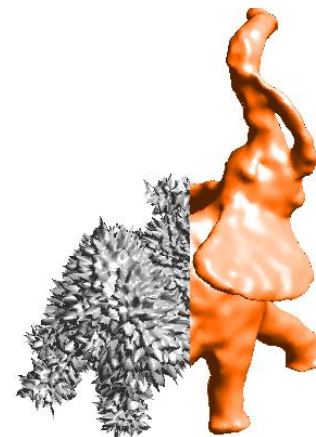
Geometry Processing Tasks



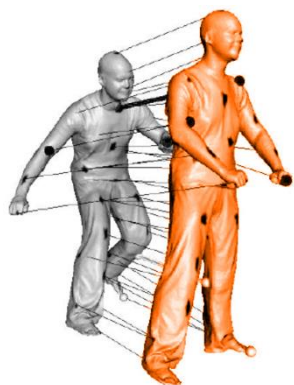
[reconstruction]



[remeshing]



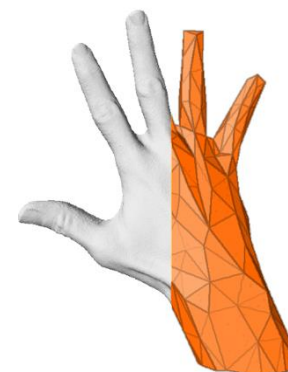
[filtering]



[shape analysis]



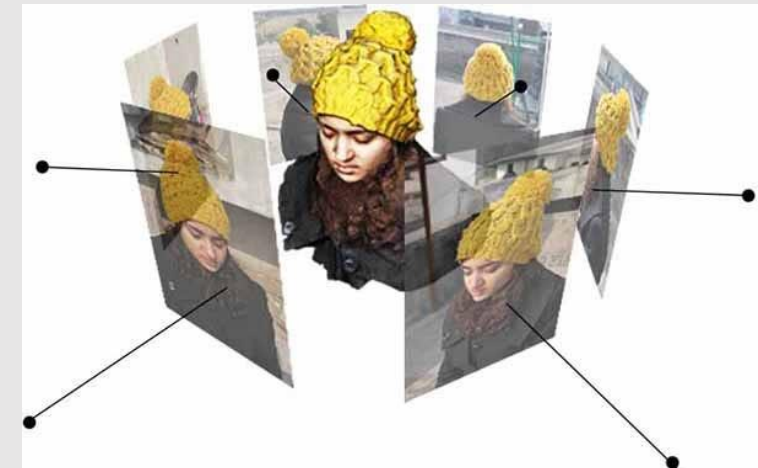
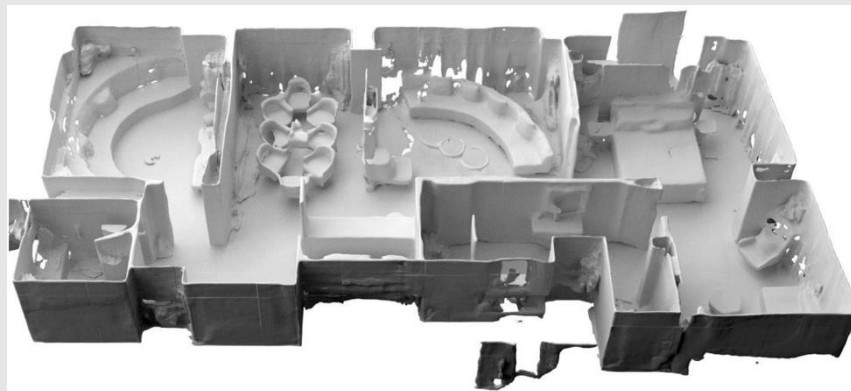
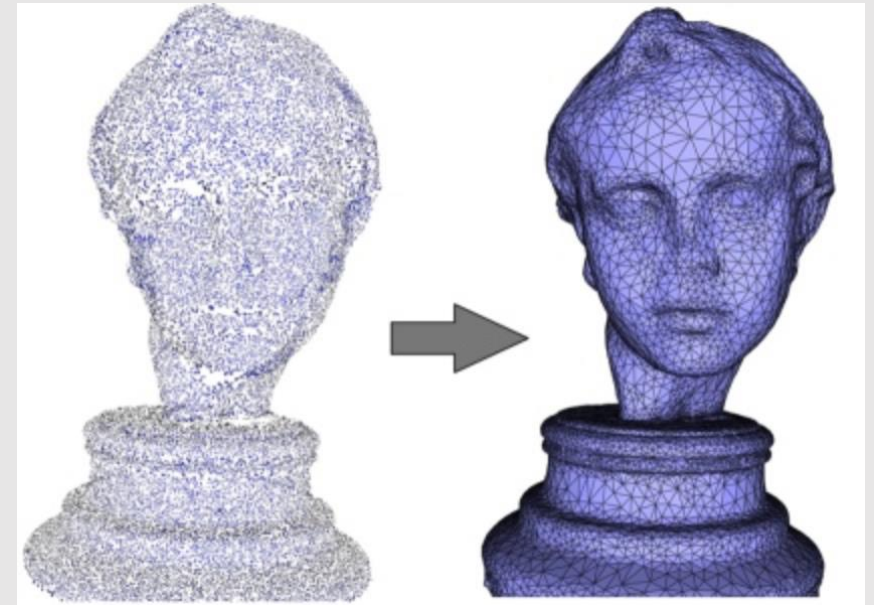
[parameterization]



[compression]

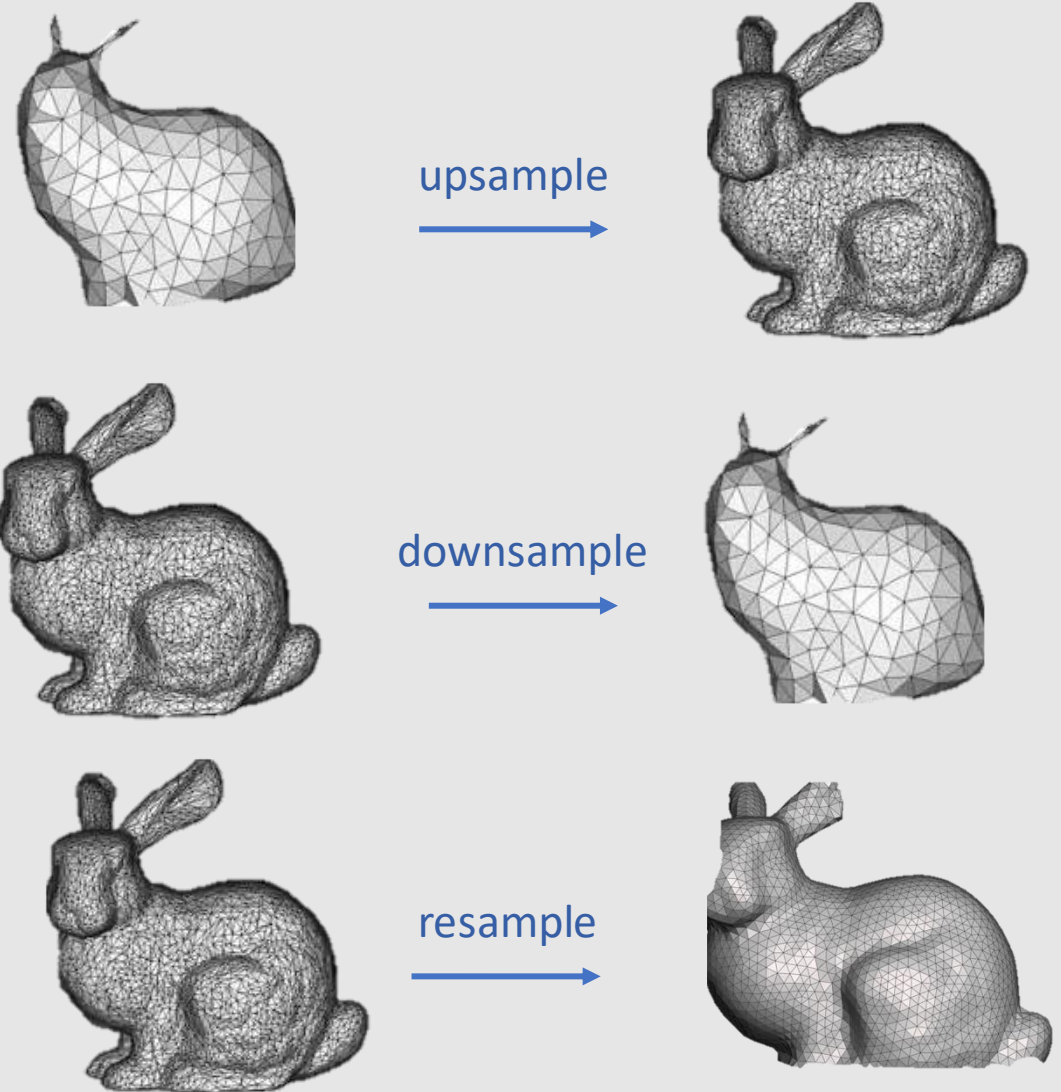
Geometry Processing: Reconstruction

- Given samples of geometry, reconstruct surface
- **Data:** What are “samples”?
 - Points & normals
 - Image pairs / sets (multi-view stereo)
 - Line density integrals (MRI/CT scans)
- **Algorithm:** How do you get a surface?
 - Silhouette-based (visual hull)
 - Voronoi-based (e.g., power crust)
 - PDE-based (e.g., Poisson reconstruction)
 - Radon transform / isosurfacing (marching cubes)



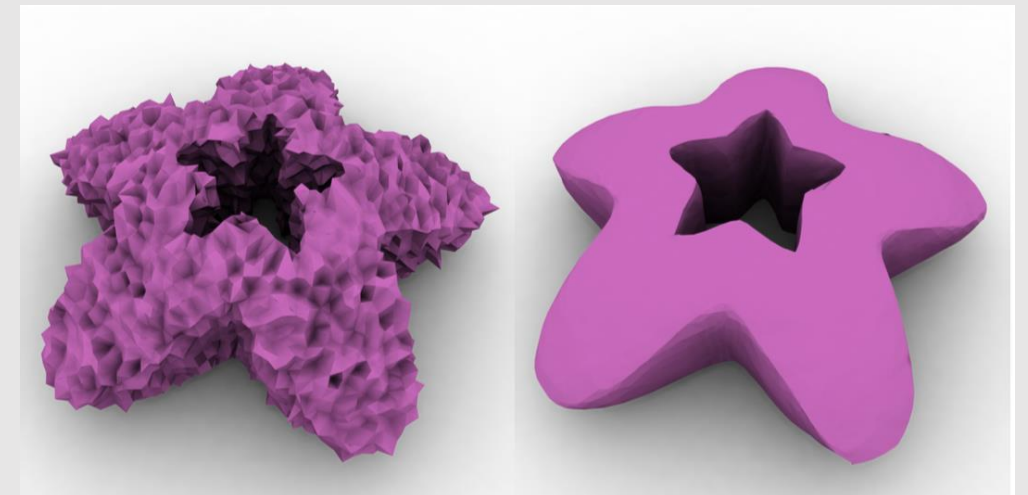
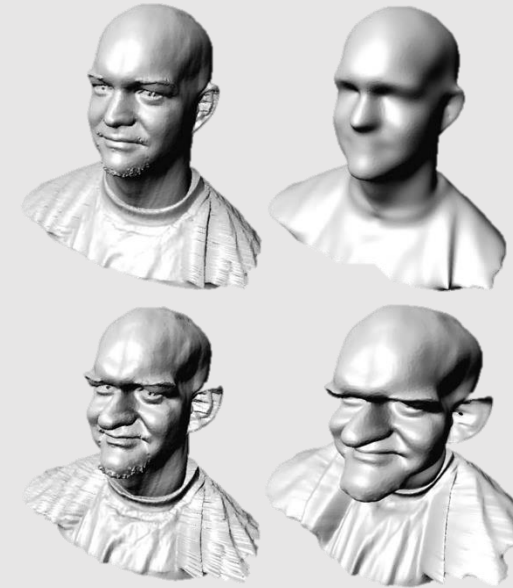
Geometry Processing: Remeshing

- **Upsampling:** increase resolution via interpolation
 - Subdivision
 - Bilateral upsampling
- **Downsampling:** decrease resolution via averaging
 - Subsampling
 - Iterative decimation
- **Resampling:** modify sample distribution to improve quality
 - Remeshing



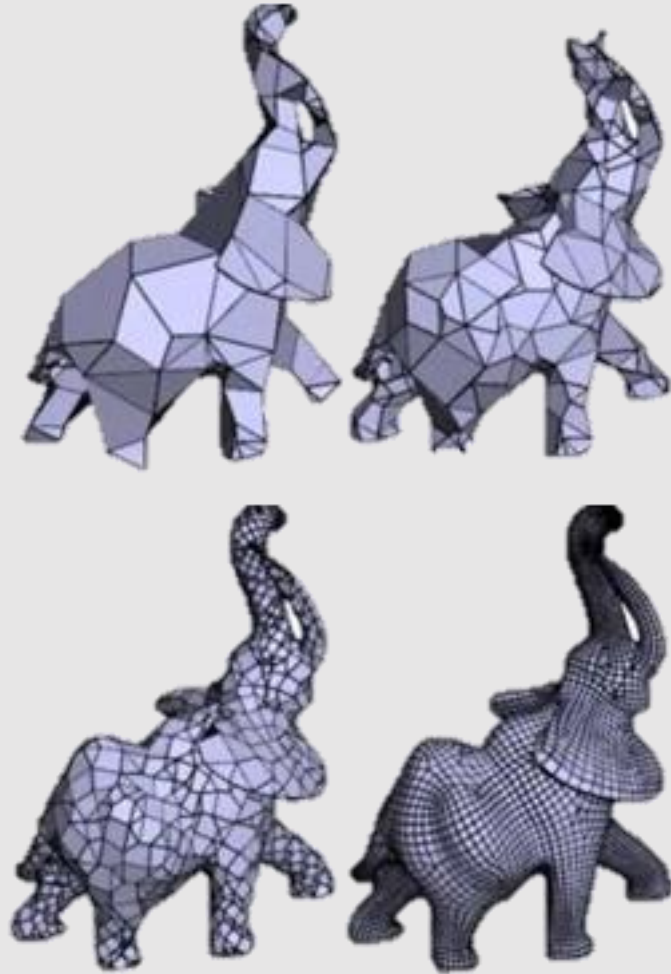
Geometry Processing: Filtering

- Remove noise, or emphasize important features (e.g., edges)
 - Curvature flow
 - Bilateral filtering
 - Spectral filtering
- Useful for cleaning up noisy 3D scans
 - **Example:** Kinect
 - Search for key facial components while smoothing out artifacts in between



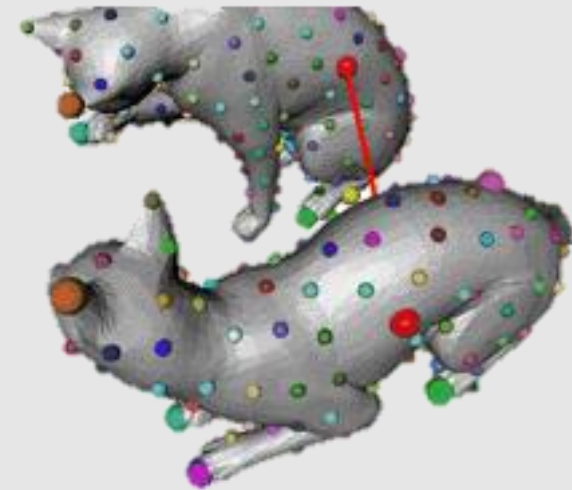
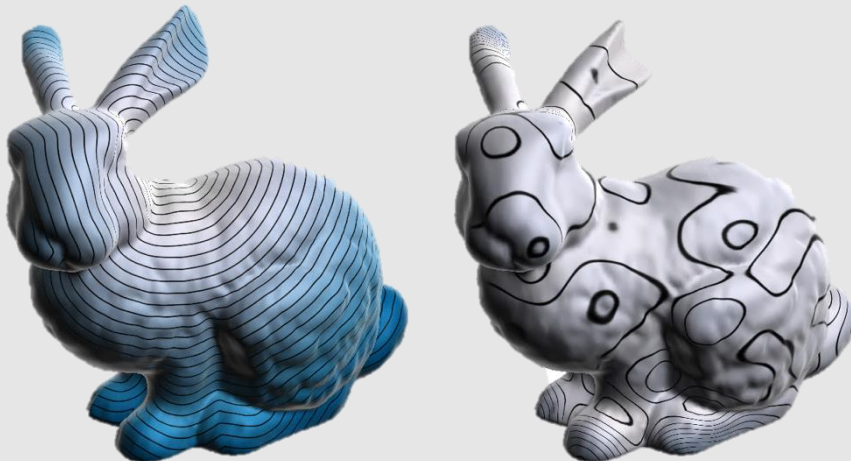
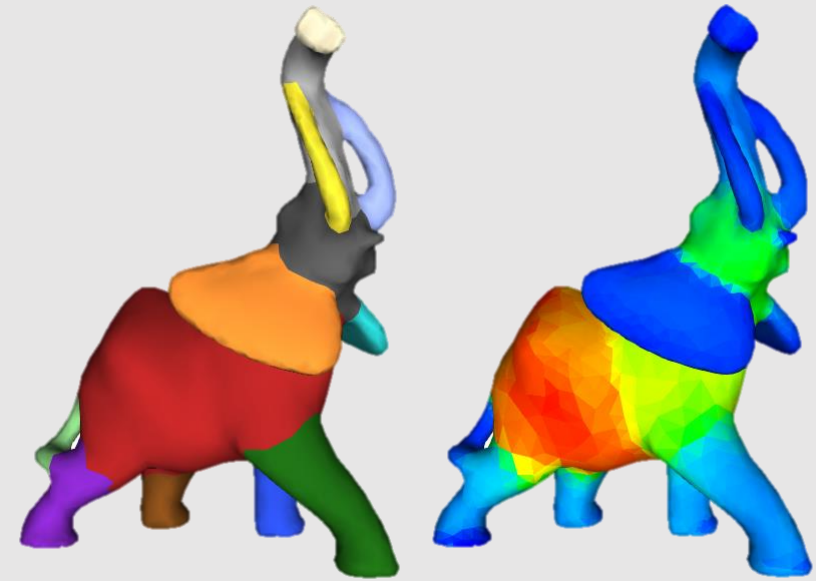
Geometry Processing: Compression

- Reduce storage size by eliminating redundant data/approximating unimportant data
- Techniques may be either lossy or lossless:
 - **Lossy:** unable to reconstruct original mesh
 - Able to compress the mesh better
 - **Lossless:** able to reconstruct original mesh
 - Not as good compression results
- Somewhat similar idea to downsampling
 - Added objective of wanting to recover the original mesh perfectly (lossless) or as best as possible (lossy)



Geometry Processing: Shape Analysis

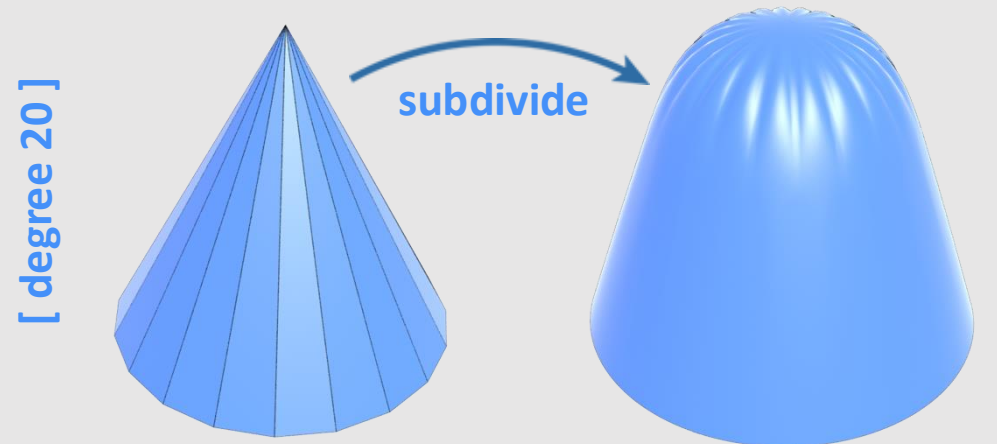
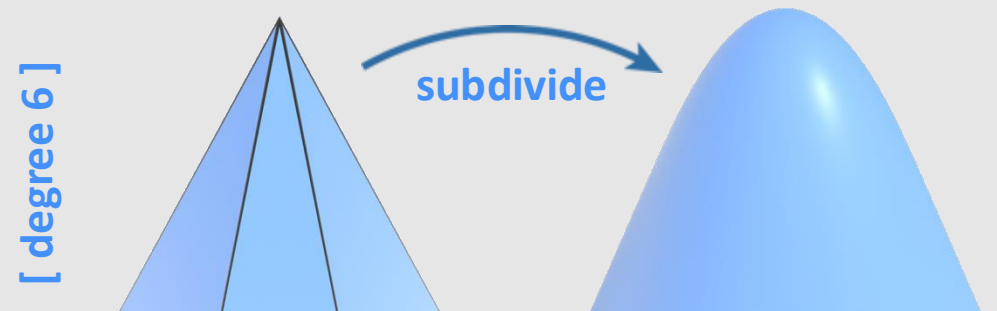
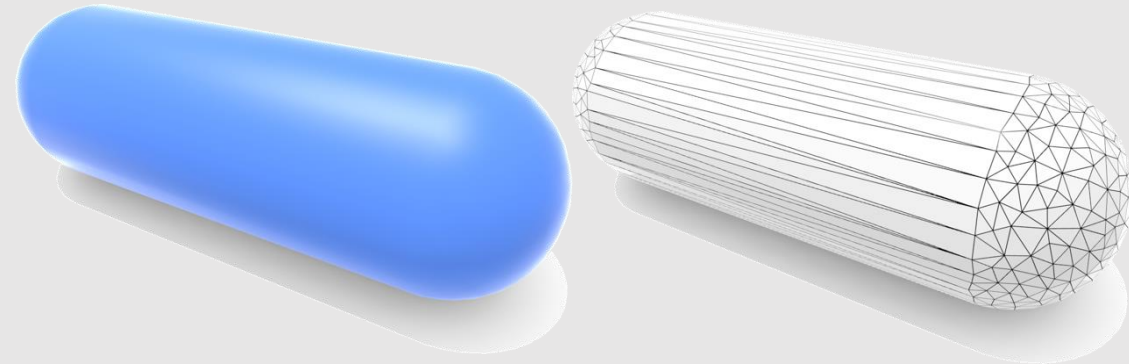
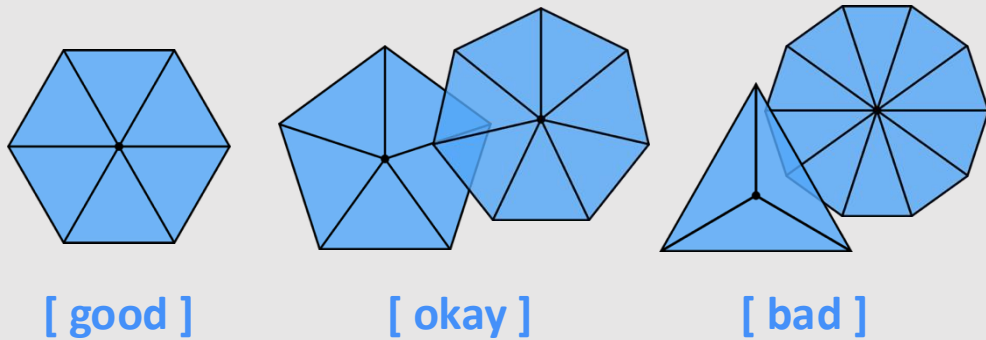
- Identify/understand important semantic features
 - Segmentation
 - Correspondence
 - Symmetry detection
 - Alignment
 - **Objective:** Compute similarities between two meshes
- Starting to become AI-driven



But what makes a good mesh?

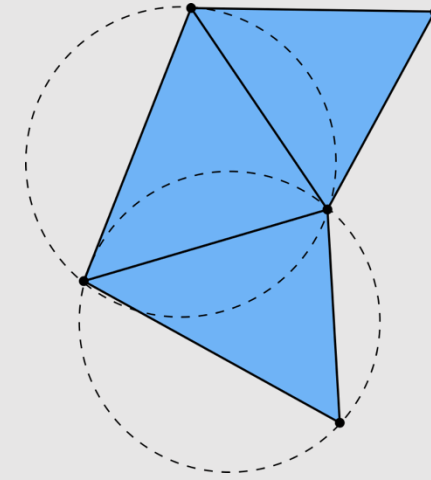
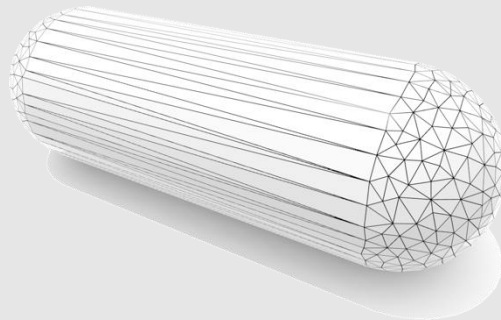
A Good Mesh Has...

- **Good approximation of original shape**
 - Keep elements that contribute shape info
 - More elements where curvature is high
- **Regular vertex degree**
 - Degree 6 for triangle mesh, 4 for quad mesh
 - Better polygon shape
 - More regular computation
 - Smoother subdivision

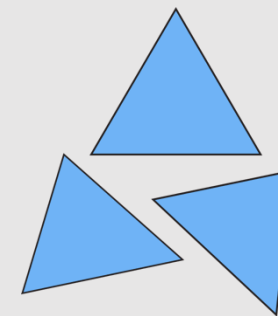


A Good Mesh Has...

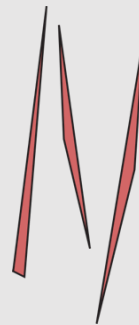
- **Good triangle shape**
 - All angles close to 60 degrees
- More sophisticated condition: **Delaunay**
 - For every triangle, the unique circumcircle (circle passing through all vertices of the triangle) does not encase any other vertices
 - Many nice properties:
 - Maximizes minimum angle
 - Smoothest interpolation
- **Tradeoff:** sometimes a mesh can be approximated best with long & skinny triangles
 - Doesn't make the mesh Delaunay anymore
 - **Example:** cylinder



[delaunay]



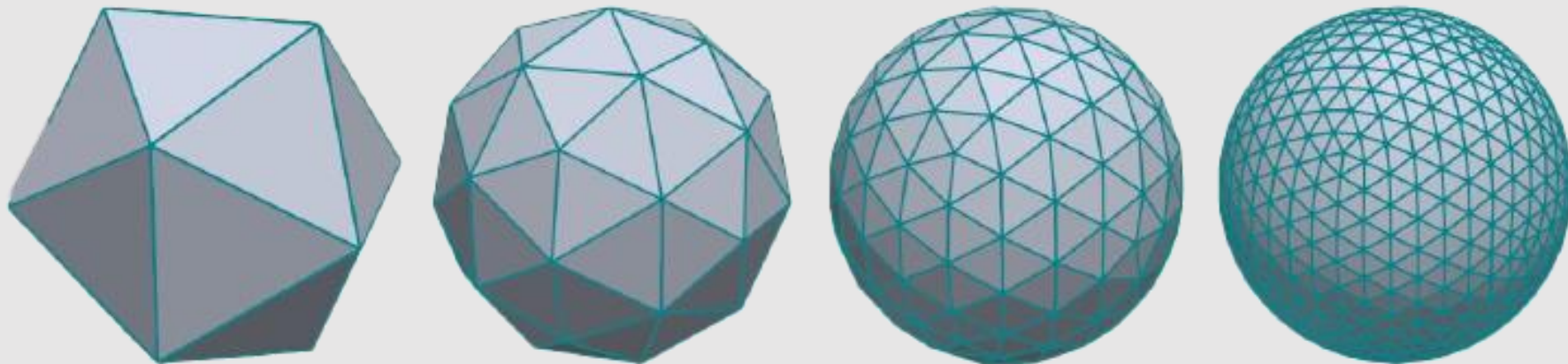
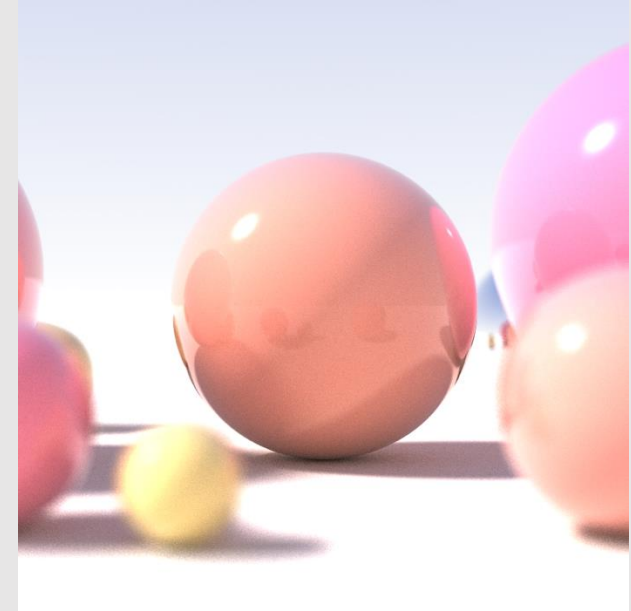
[good]



[bad]

A Good Mesh Has...

- **Good approximation on the vertices & interpolation**
 - Placing vertices on a sphere and linearly interpolating is not enough
 - Adding more vertices yields better approximation, but now too much data to store/process!
 - Need to apply correct **surface normals**

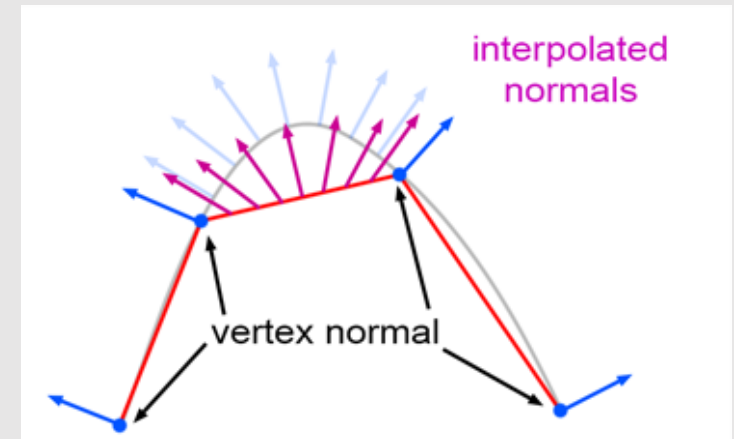
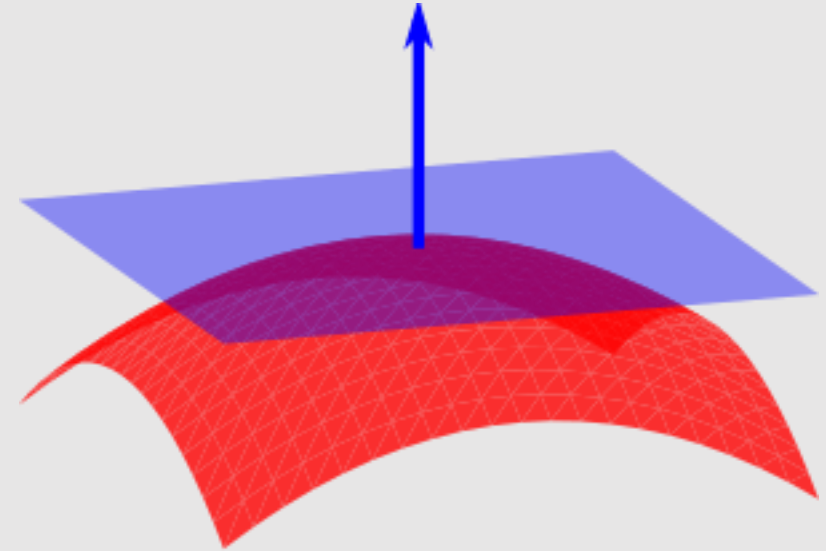
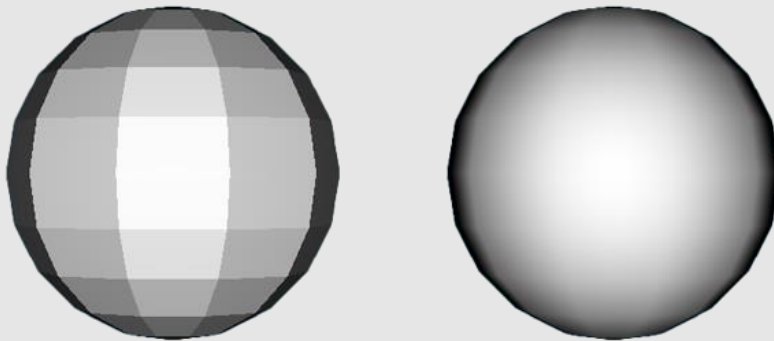


Surface Normals

- A **surface normal** is a vector that is perpendicular to the surface at a given point
 - The surface normal for a surface $z = f(x, y)$ at point (x', y') is:

$$N_s = \begin{bmatrix} f_x(x', y') \\ f_y(x', y') \\ -1 \end{bmatrix}$$

- Value assigned per-vertex
- Surface normals are interpolated via-barycentric coordinates and extruded in that direction to provide the appearance of curvature during rendering



- ~~Good Geometry~~

- Geometric Subdivision

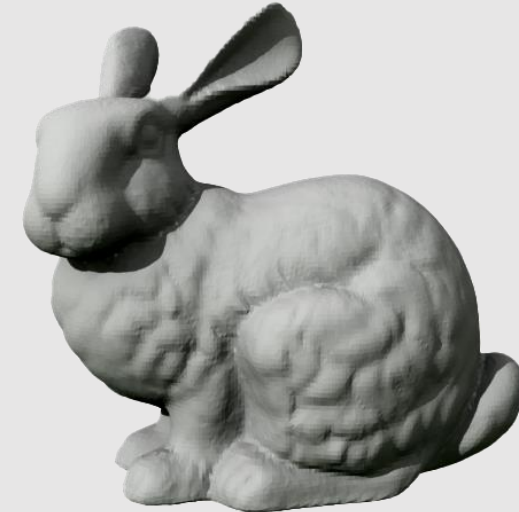
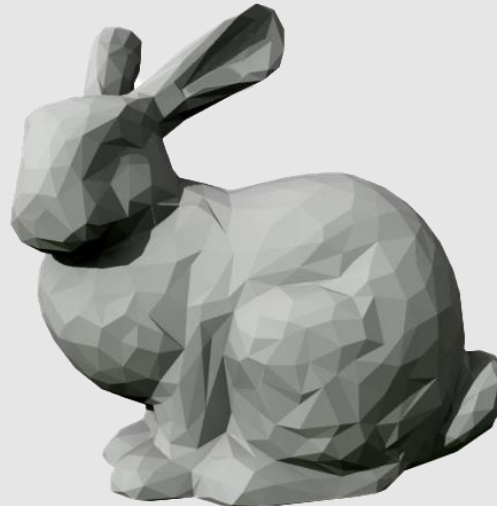
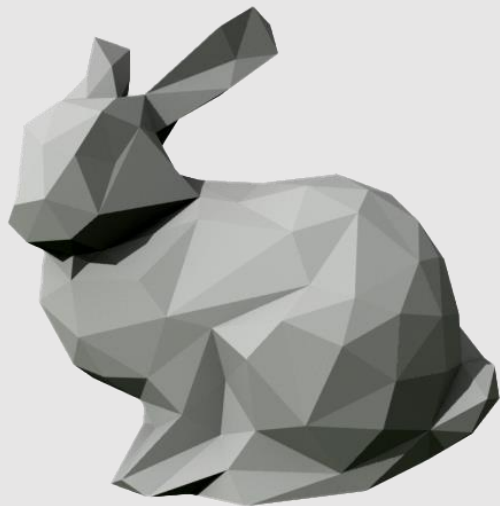
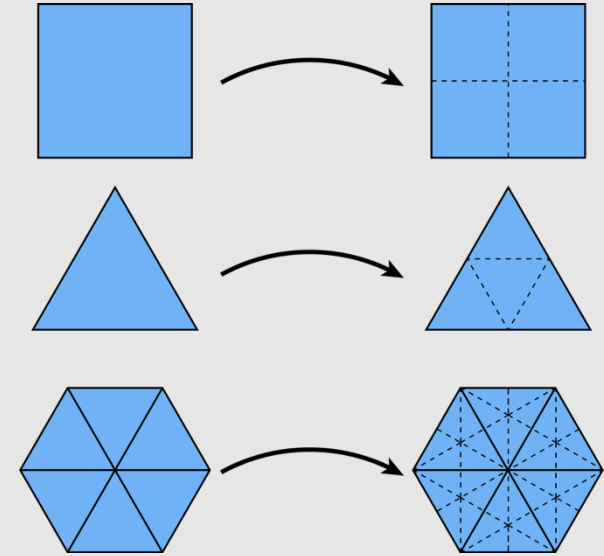
- Geometric Simplification

- Geometric Remeshing

- Geometric Queries

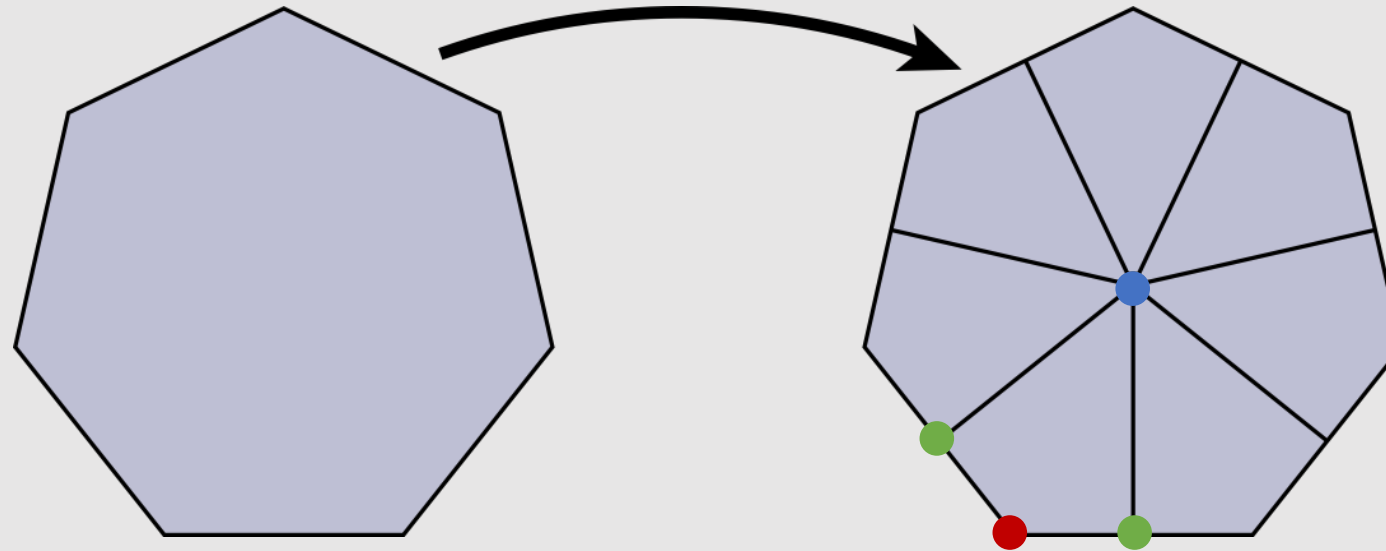
Subdivision

- Subdivision is the process of **upsampling** a mesh
- General formula:
 - **Split Step:** split faces into smaller faces
 - **Move Step:** replace vertex positions/properties with weighted average of neighbors



Linear Subdivision [Split Step]

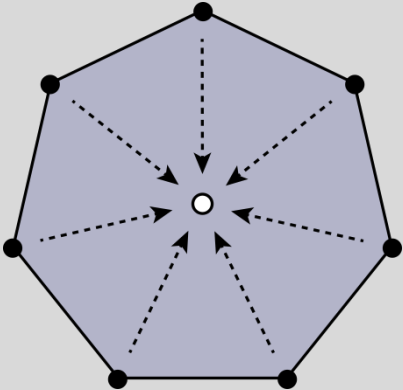
- Split every polygon (any # of sides) into quadrilaterals



- Each new quadrilateral now has:
 - **[face coords]** : 1 new vertex from the mesh face center
 - **[edge coords]** : 2 new vertices from the new edges
 - **[vertex coords]** : 1 new vertex from the original mesh face

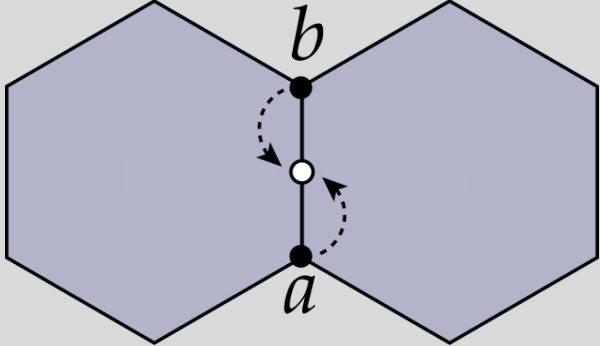
Linear Subdivision [Move Step]

Step 1: Face Coords



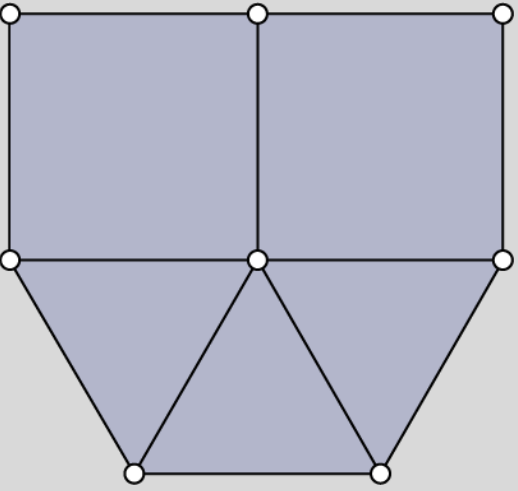
$\frac{1}{n} \sum_i p_i$

Step 2: Edge Coords



$(a + b) / 2$

Step 3: Vertex Coords



$v_i = v_i$

Catmull Clark Subdivision

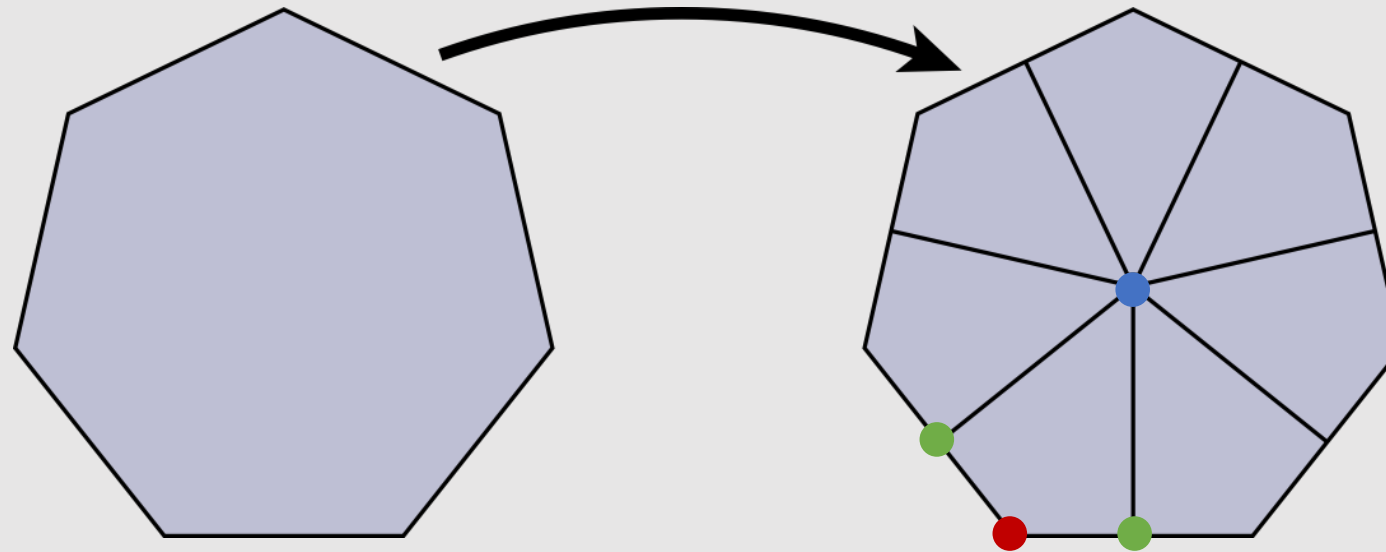
- In 1978, Edwin Catmull (Pixar co-founder) and Jim Clark wanted to create a generalization of **uniform bi-cubic b-splines** for 3D meshes
 - We will cover what this means in a future lecture :)
- Became ubiquitous in graphics
 - Helped Catmull win an Academy Award for Technical Achievement in 2005



OpenSubdiv V2 (2018) Pixar

Catmull-Clark Subdivision [Split Step]

- Split every polygon (any # of sides) into quadrilaterals

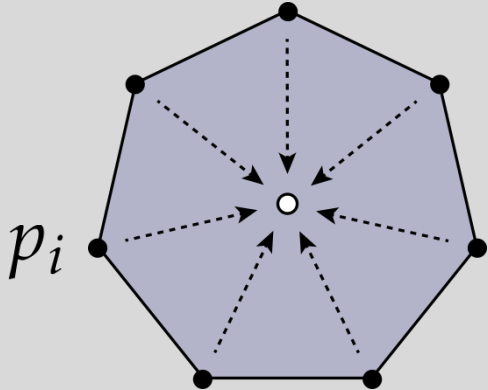


- Each new quadrilateral now has:
 - **[face coords]** : 1 new vertex from the mesh face center
 - **[edge coords]** : 2 new vertices from the new edges
 - **[vertex coords]** : 1 new vertex from the original mesh face

**No different than
Linear Subdivision!**

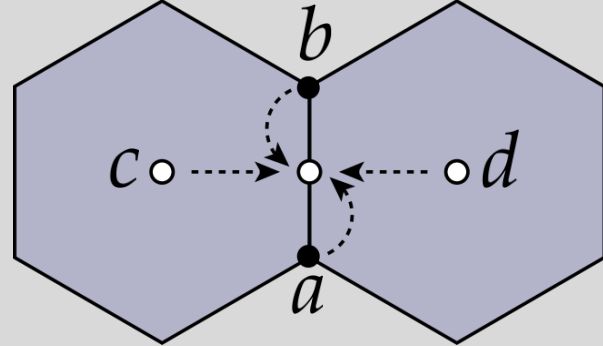
Catmull-Clark Subdivision [Move Step]

Step 1: Face Coords



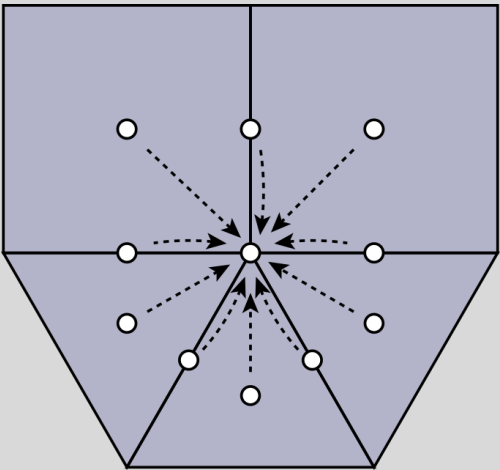
$\frac{1}{n} \sum_i p_i$

Step 2: Edge Coords



$(a+b+c+d)/4$

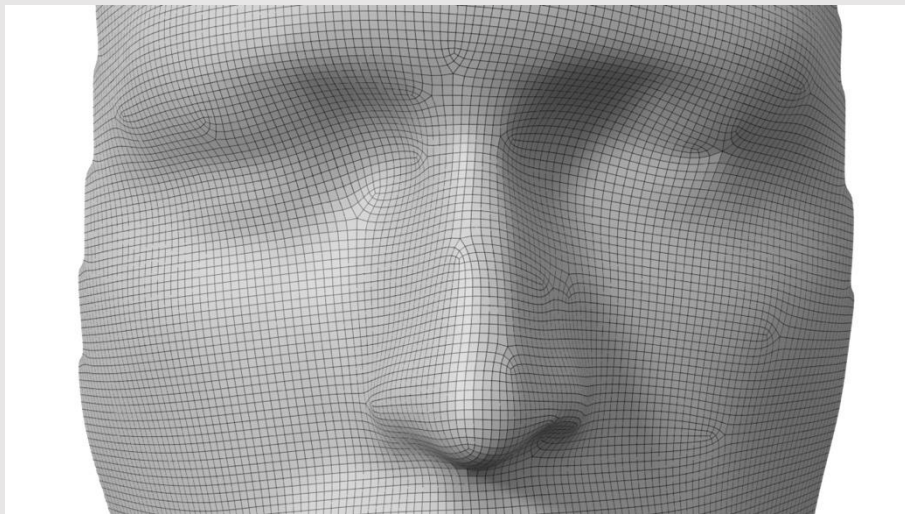
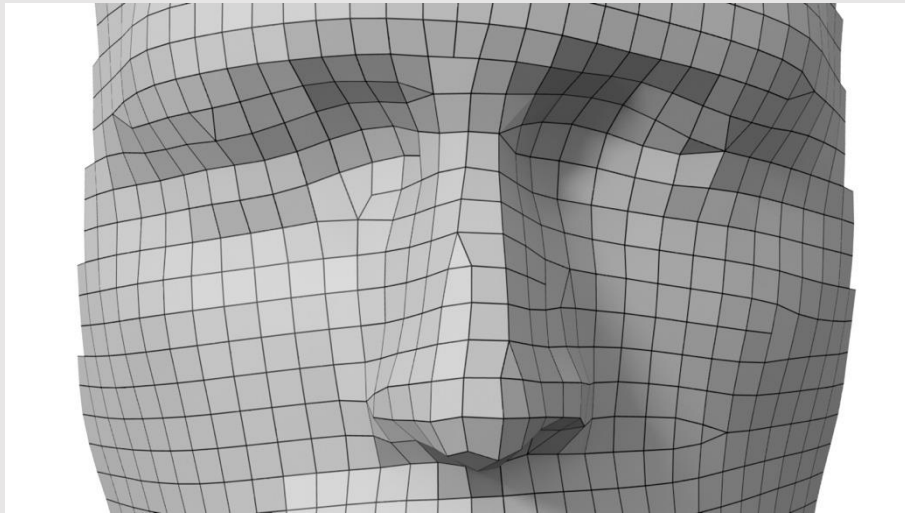
Step 3: Vertex Coords



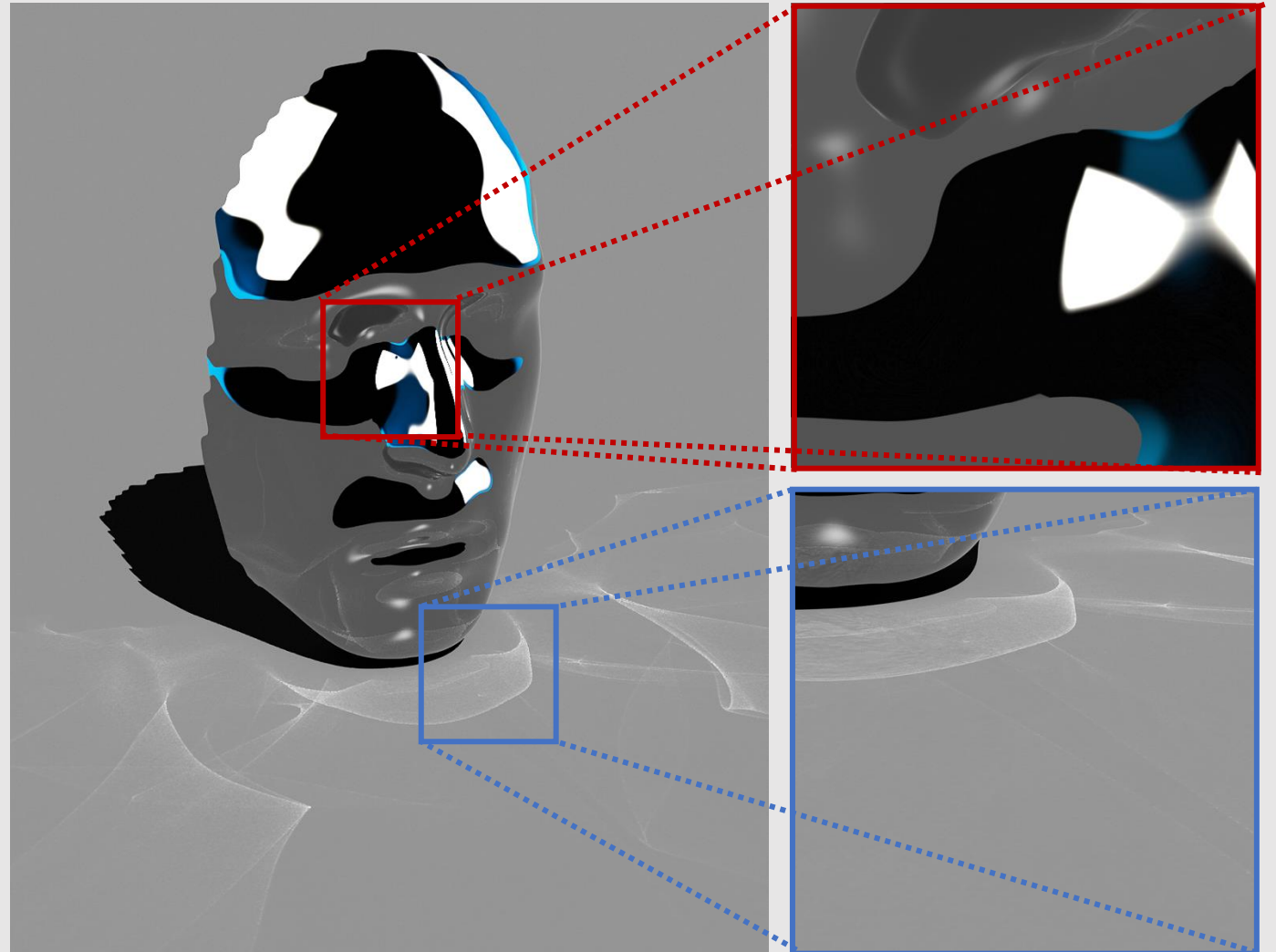
$$\frac{Q + 2R + (n - 3)S}{n}$$

- n - vertex degree
- Q - average of face coords around vertex
- R - average of edge coords around vertex
- S - original vertex position

Catmull-Clark Subdivision [Quads]



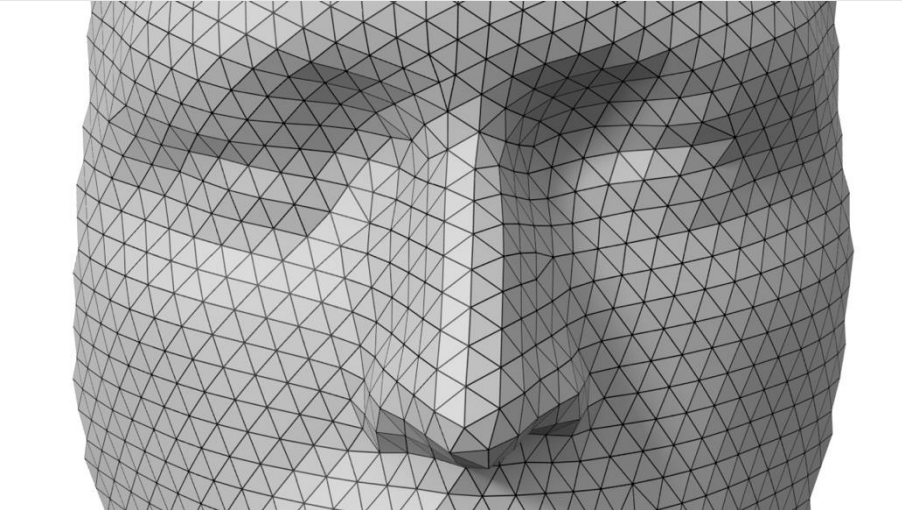
Few irregular vertices



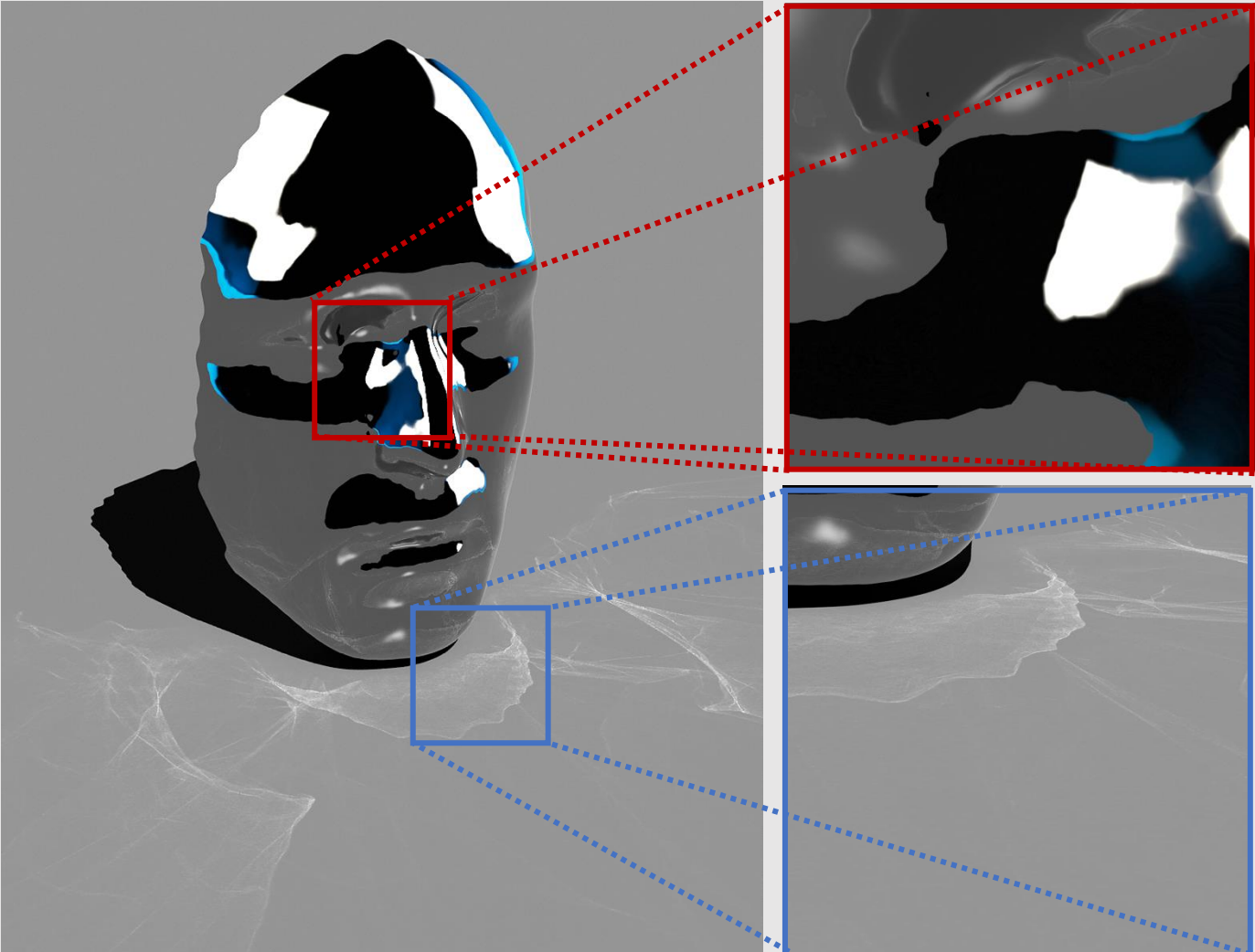
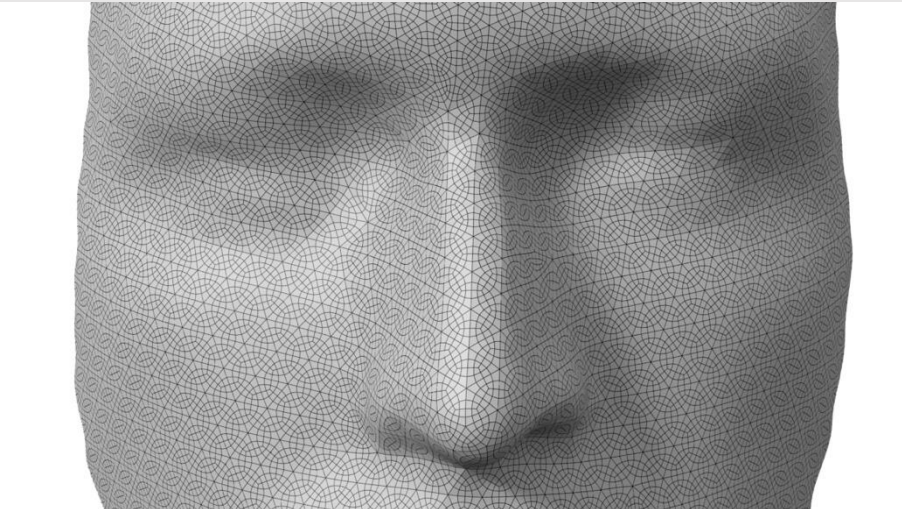
Smoothly-varying surface normals

Smooth reflections/caustics

Catmull-Clark Subdivision [Triangles]



Many irregular vertices



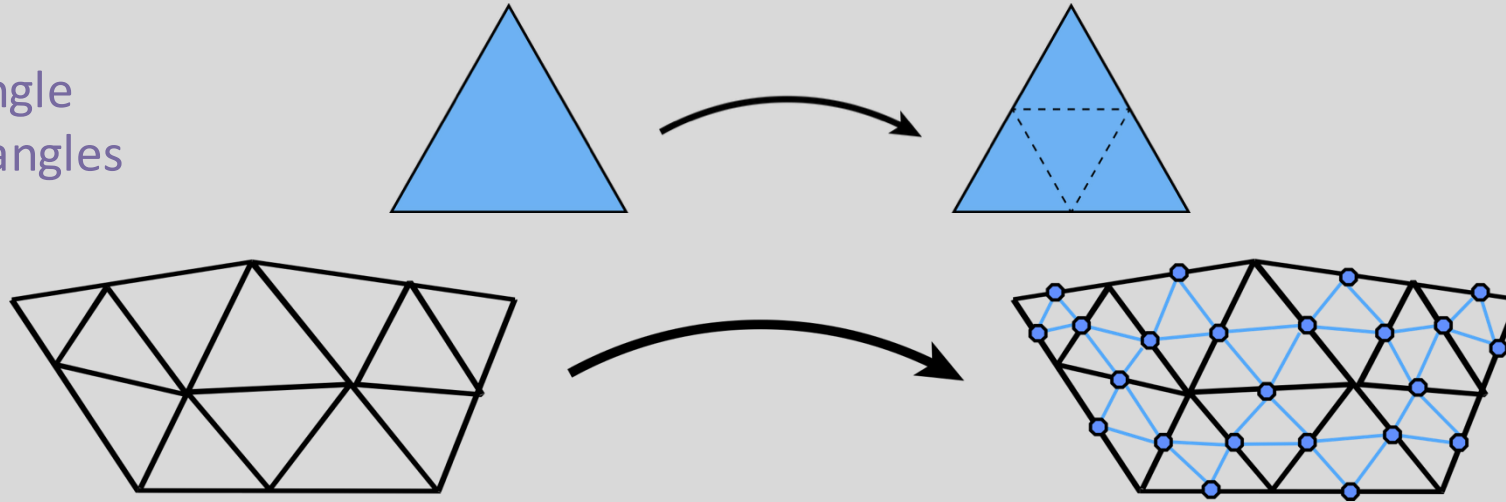
Erratic surface normals

Jagged reflections/caustics

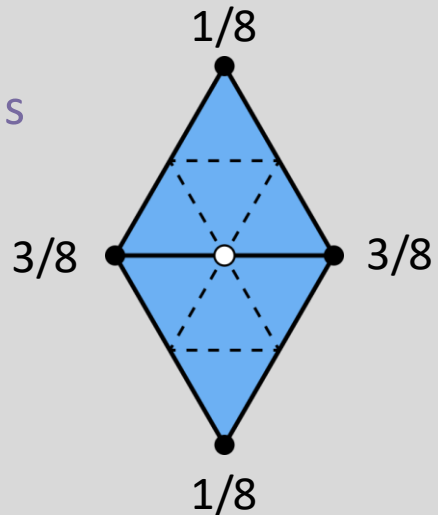
Is there a better subdivision scheme we can use for triangulated meshes?

Loop Subdivision

Step 1:
Split triangle
into 4 triangles

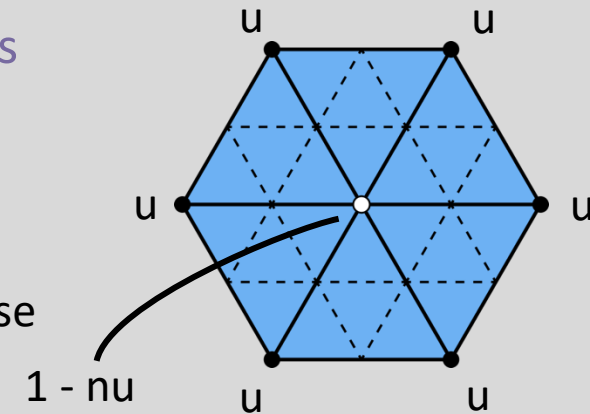


Step 2:
Assign new coords



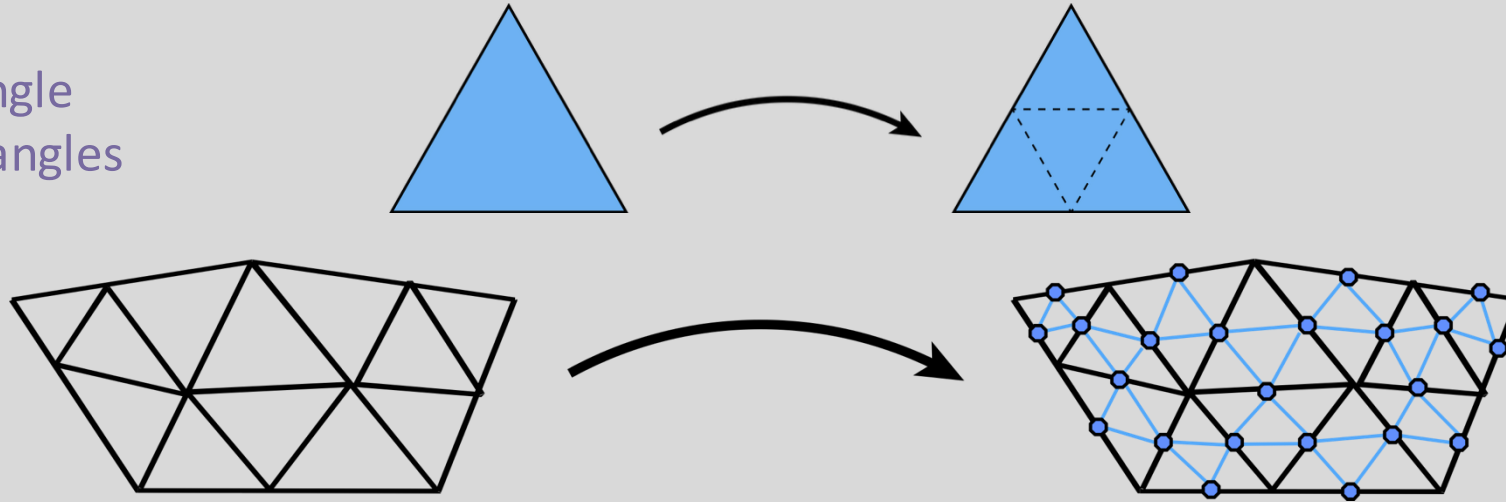
Step 3:
Assign old coords

n - vertex degree
 u - $3/16$ if $n=3$
 $3/(8n)$ otherwise

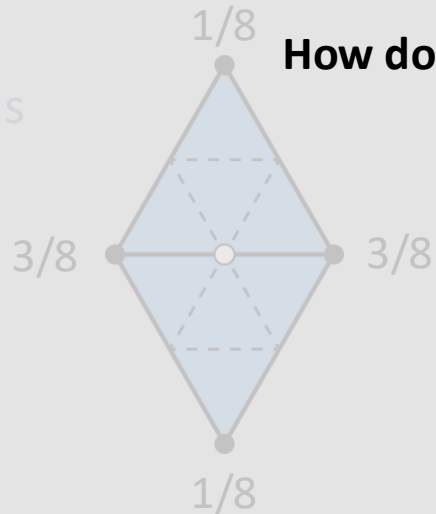


Loop Subdivision

Step 1:
Split triangle
into 4 triangles



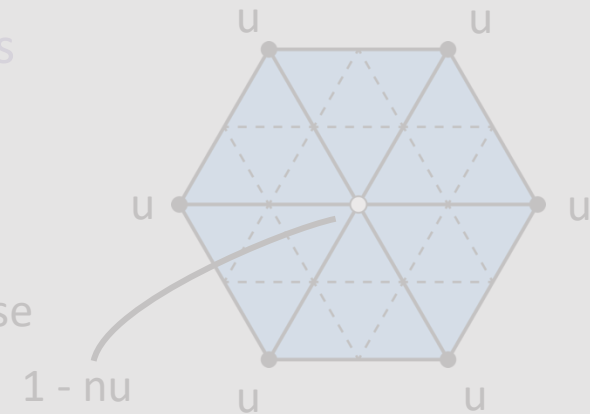
Step 2:
Assign new coords



How do we efficiently do Step 1?

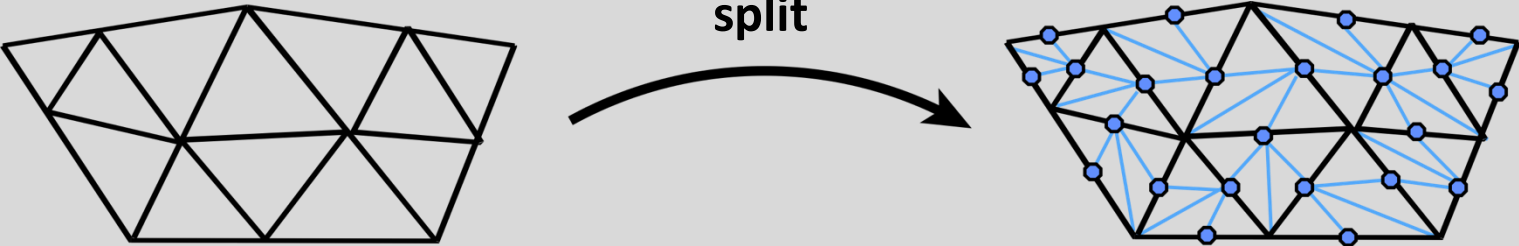
Step 2:
Assign old coords

n - vertex degree
 u - $3/16$ if $n=3$
 $3/(8n)$ otherwise

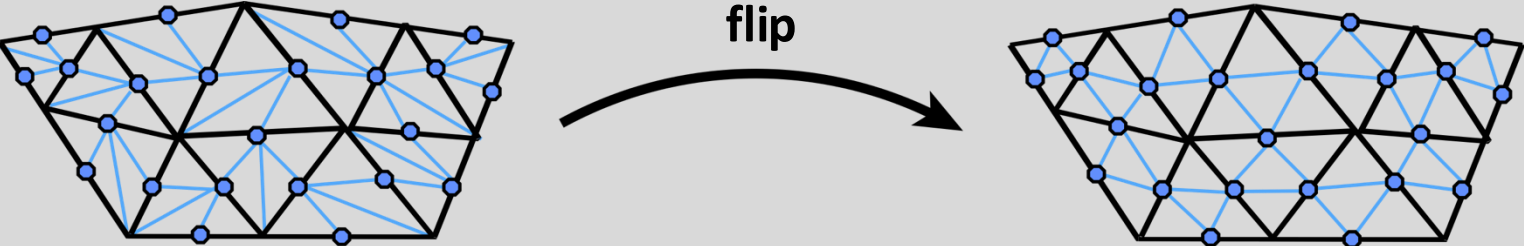


Loop Subdivision Using Local Ops

Step 1:
Split all edges in any order

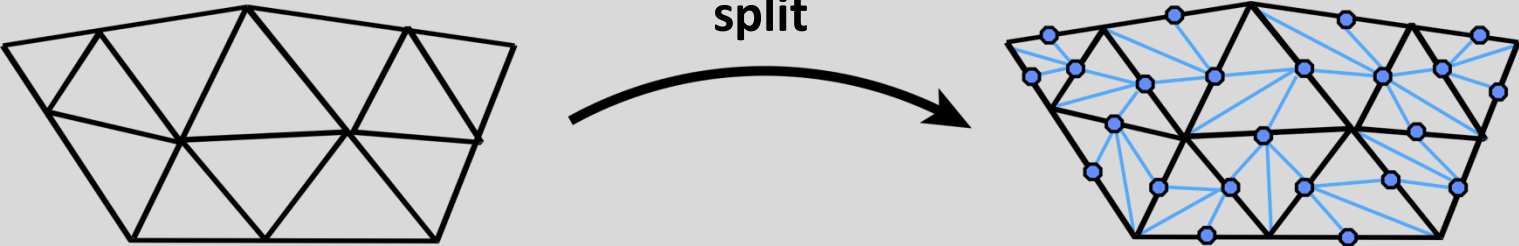


Step 2:
Flip new edges until they touch two new vertices



Loop Subdivision Using Local Ops

Step 1:
Split all edges in any order



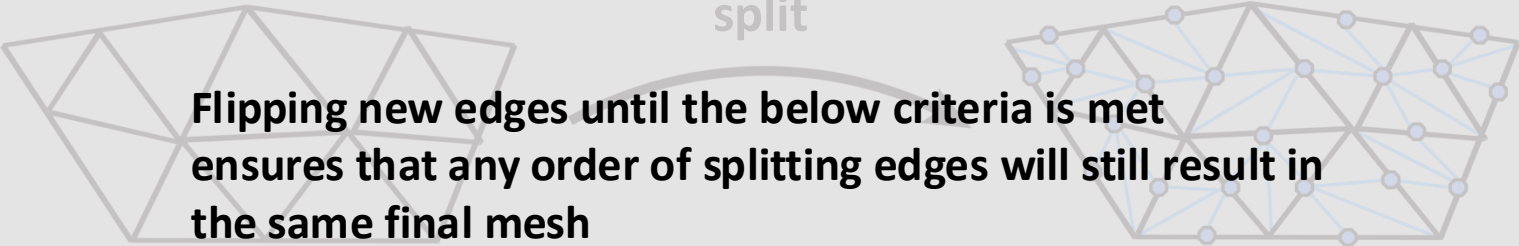
Step 2:
The order we traverse the edges and split them matter!
Flip new edges until they touch two new vertices

Traversing edges forward and splitting vs traversing them backwards and splitting will yield different meshes

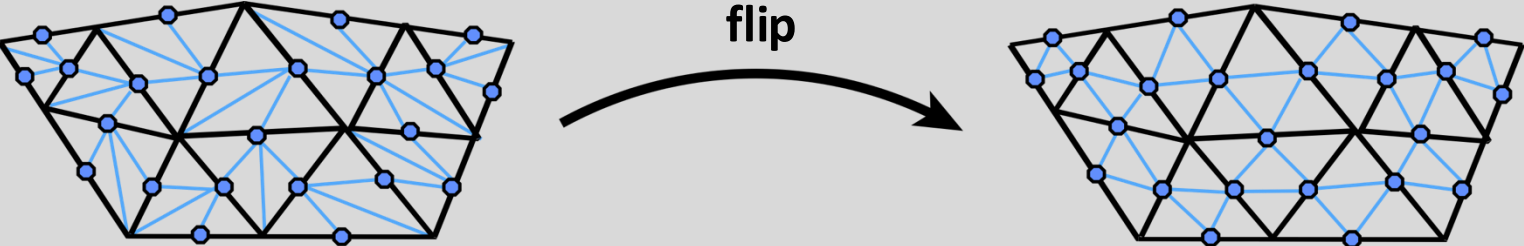


Loop Subdivision Using Local Ops

Step 1:
Split all edges in any order



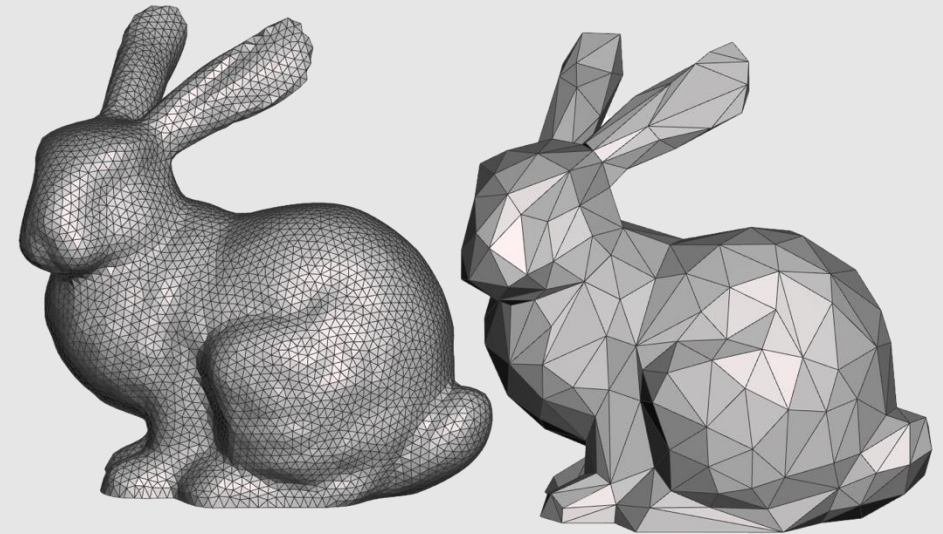
Step 2:
Flip new edges until they touch two new vertices



- ~~Good Geometry~~
- ~~Geometric Subdivision~~
- Geometric Simplification
- Geometric Remeshing
- Geometric Queries

Simplification

- Simplification is the process of **downsampling** a mesh
 - Less Storage overhead
 - Smaller file sizes
 - Less Processing overhead
 - Less elements to iterate over
 - Larger mesh modifications
 - Instead of moving tens of smaller mesh elements, move one larger mesh element

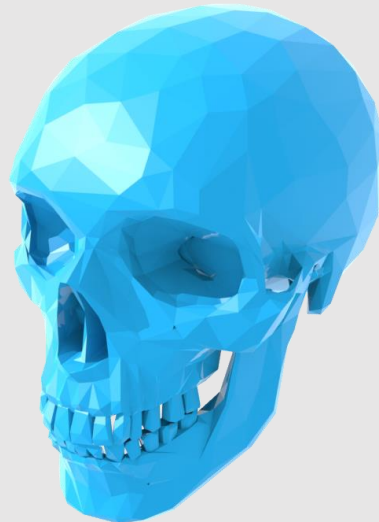


Simplification Algorithm Basics

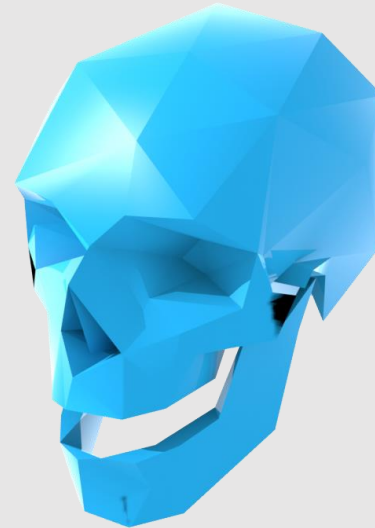
- Greedy Algorithm:
 - Assign each edge a cost
 - Collapse edge with least cost
 - Repeat until target number of elements is reached
- Particularly effective cost function: **quadratic error metric****



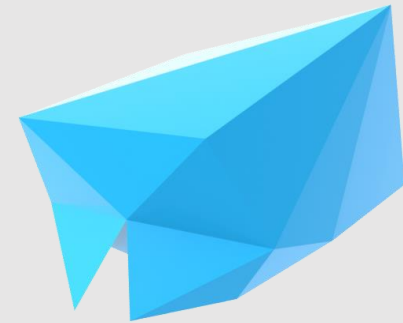
[30,000 triangles]



[3,000 triangles]



[300 triangles]



[30 triangles]

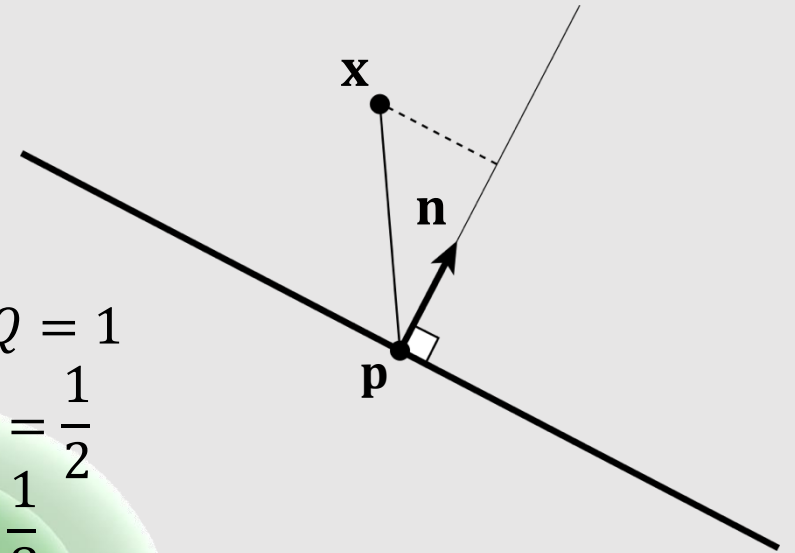
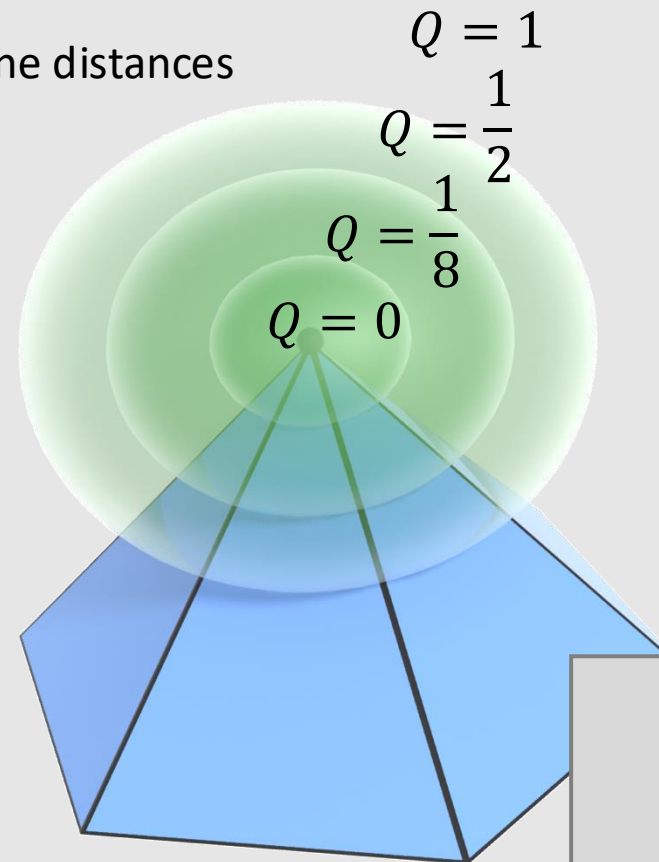
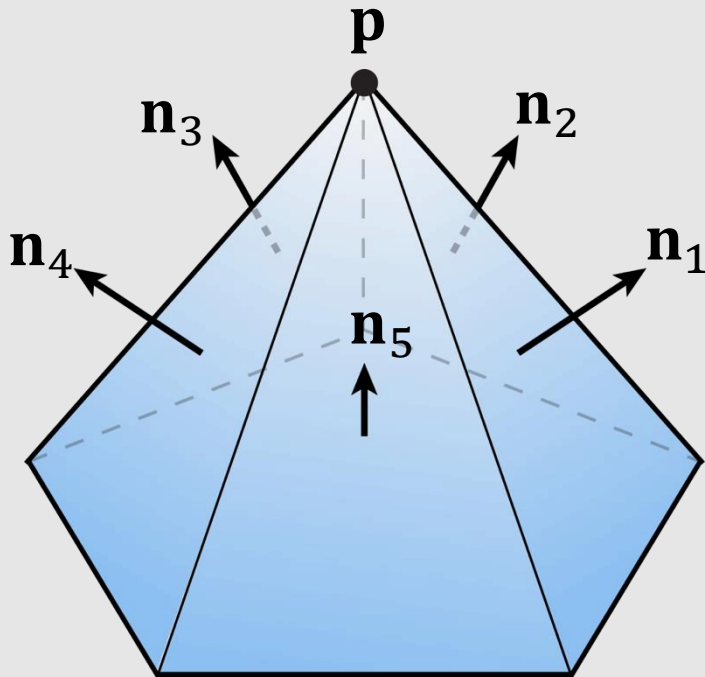
**invented at CMU (Garland & Heckbert 1997)

Quadratic Error Metric

- **Goal:** approximate a point's distance from a collection of triangles
 - **Review:** what is the distance of a point \mathbf{x} from a plane \mathbf{p} with normal \mathbf{n} ?

$$\text{dist}(\mathbf{x}) = \langle \mathbf{n}, \mathbf{x} \rangle - \langle \mathbf{n}, \mathbf{p} \rangle = \langle \mathbf{n}, \mathbf{x} - \mathbf{p} \rangle$$

- Quadric error is the sum of squared point-to-plane distances



$$Q(\mathbf{x}) := \sum_{i=1}^k \langle \mathbf{n}_i, \mathbf{x} - \mathbf{p} \rangle^2$$

Quadratic Error As Homogeneous Coordinates

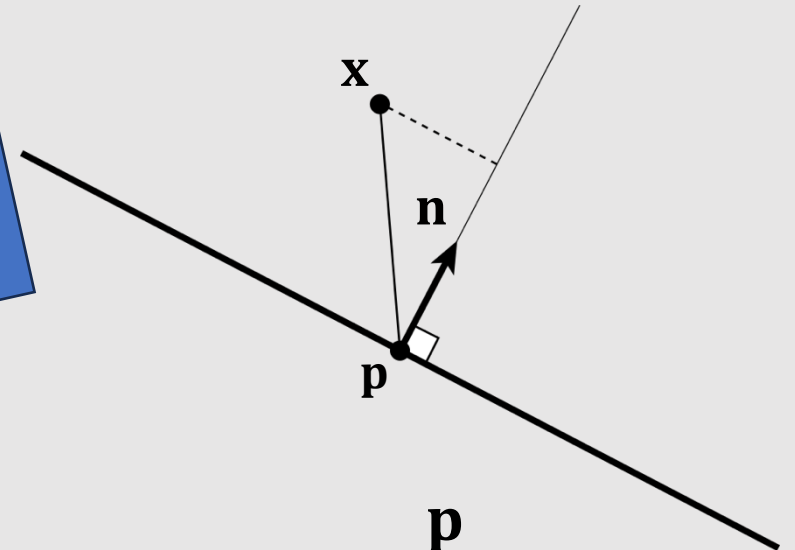
- Given:

- Query point $\mathbf{x} = (x, y, z)$
- Normal $\mathbf{n} = (a, b, c)$
- Offset from origin $d = -\langle \mathbf{n}, \mathbf{p} \rangle$

- We can rewrite in homogeneous coordinates:

- $\mathbf{u} = (x, y, z, 1)$
- $\mathbf{v} = (a, b, c, d)$

Note the negative sign!
You can check that signed distance of p is zero

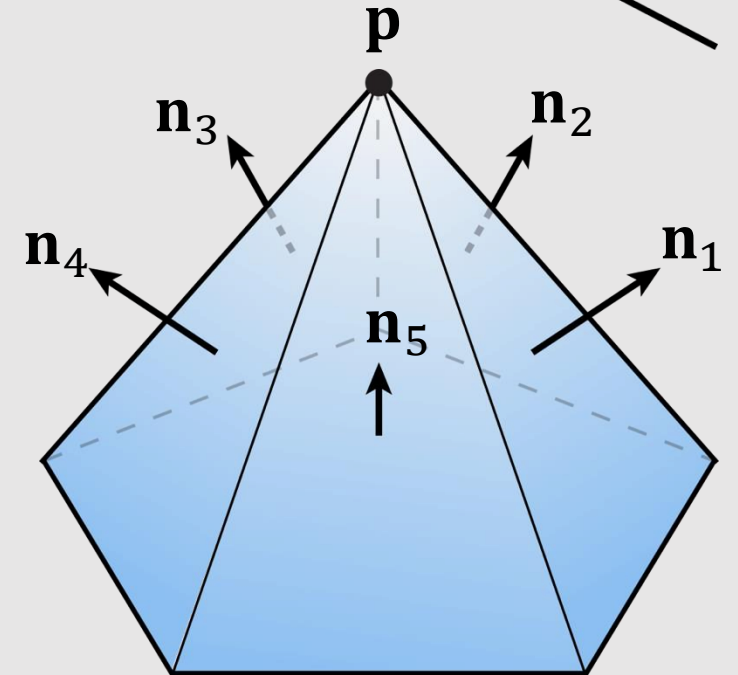


- Signed distance to plane is then just $\langle \mathbf{u}, \mathbf{v} \rangle = ax + by + cz + d$
- Squared distance is $\langle \mathbf{u}, \mathbf{v} \rangle^2 = \mathbf{u}^T (\mathbf{v}\mathbf{v}^T) \mathbf{u} =: \mathbf{u}^T K \mathbf{u}$
 - Matrix $K = \mathbf{v}\mathbf{v}^T$ encodes squared distance to plane

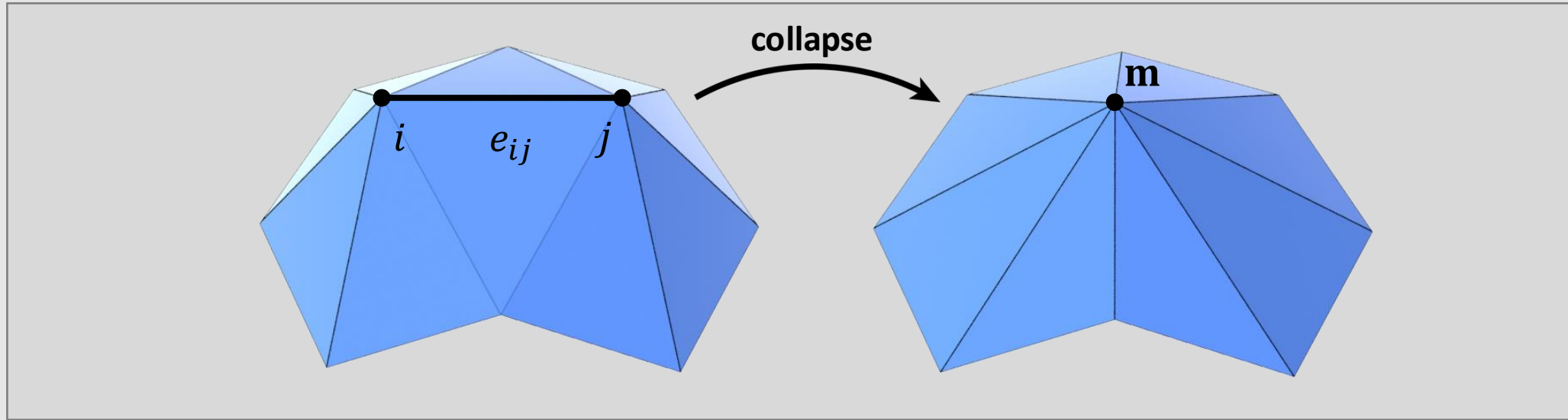
$$K = \begin{bmatrix} a^2 & ab & ac & ad \\ ab & b^2 & bc & bd \\ ac & bc & c^2 & cd \\ ad & bd & cd & d^2 \end{bmatrix}$$

- **Key Idea:** sum of matrices K represents distance to a union of planes

$$\mathbf{u}^T K_1 \mathbf{u} + \mathbf{u}^T K_2 \mathbf{u} = \mathbf{u}^T (K_1 + K_2) \mathbf{u}$$



Quadratic Error of Edge Collapse

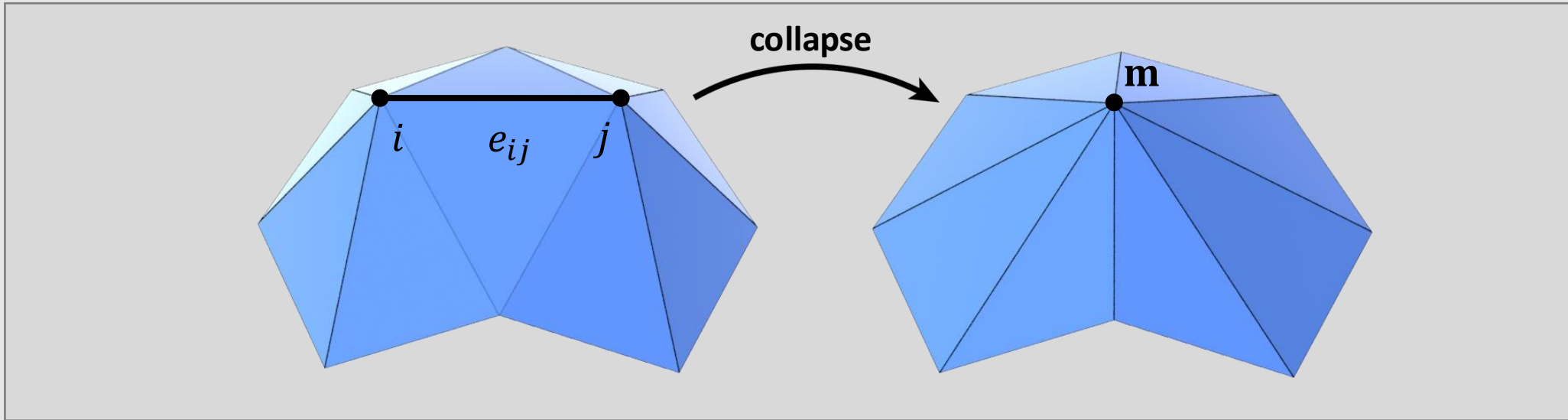


- How much does it cost to collapse an edge e_{ij} ?
 - Compute midpoint \mathbf{m} , measure error as

$$Q(\mathbf{m}) = \mathbf{m}^T(K_i + K_j)\mathbf{m}$$

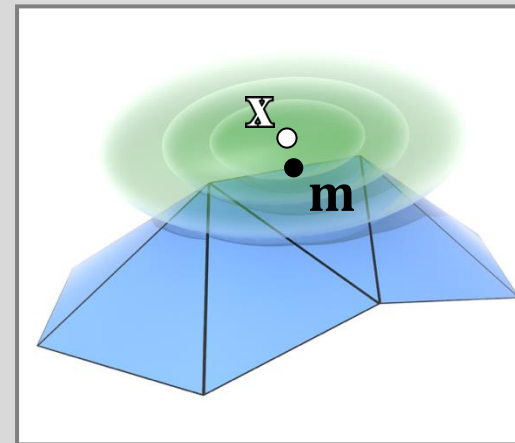
- Error becomes “score” for e_{ij} , determining priority
 - Q : where to put \mathbf{m} ?

Quadratic Error of Edge Collapse



$$Q(\mathbf{m}) = \mathbf{m}^T (K_i + K_j) \mathbf{m}$$

- Find point \mathbf{x} that minimizes error
 - Take derivatives!



How to take a derivative of a function involving matrices?

Minimizing a Quadratic Function

To find the min of a function $f(x)$

$$f(x) = ax^2 + bx + c$$

take derivative $f'(x)$ and set equal to 0

$$f'(x) = 2ax + b = 0$$

$$x = -b/2a$$

same structure

can also write any quadratic function of n variables as a symmetric matrix A
consider the multivariable function

$$f(x, y) = ax^2 + bxy + cy^2 + dx + ey + g$$

we can rewrite it as:

$$\mathbf{x} = \begin{bmatrix} x \\ y \end{bmatrix} \quad A = \begin{bmatrix} a & b/2 \\ b/2 & c \end{bmatrix} \quad \mathbf{u} = \begin{bmatrix} d \\ e \end{bmatrix}$$

$$f(x, y) = \mathbf{x}^T A \mathbf{x} + \mathbf{u}^T \mathbf{x} + g$$

take derivative $f'(x)$ and set equal to 0

$$f'(x, y) = 2A\mathbf{x} + \mathbf{u} = 0$$

$$\mathbf{x} = -\frac{1}{2}A^{-1}\mathbf{u}$$

same structure

Positive Definite Quadratic Form

How do we know if our solution minimizes quadratic error?

$$\mathbf{x} = -\frac{1}{2}A^{-1}\mathbf{u}$$

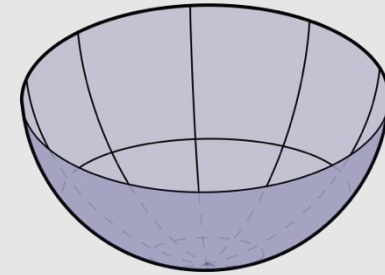
In the 1D case, we minimize the function if

$$\begin{aligned}xax &= ax^2 > 0 \\ a &> 0\end{aligned}$$

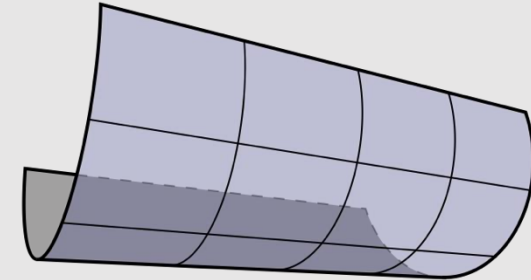
In the ND case, we minimize the function if

$$\mathbf{x}^T A \mathbf{x} > 0 \quad \forall \mathbf{x}$$

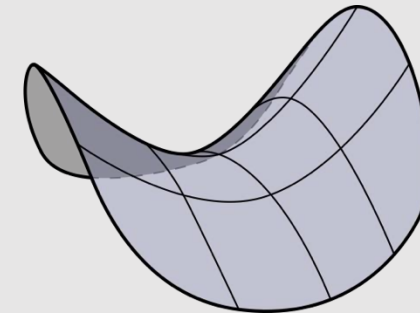
This is known as the function being positive semidefinite



[positive definite]



[positive semidefinite]



[indefinite]

Minimizing Quadratic Error

Find “best” point for edge collapse by minimizing quadratic form

$$\min_{\mathbf{u} \in \mathbb{R}^4} \mathbf{u}^T K \mathbf{u}$$

Already know fourth (homogeneous) coordinate for a point is 1

Break up our quadratic function into two pieces

$$\begin{bmatrix} \mathbf{x}^T & 1 \end{bmatrix} \begin{bmatrix} B & \mathbf{w} \\ \mathbf{w}^T & d^2 \end{bmatrix} \begin{bmatrix} \mathbf{x} \\ 1 \end{bmatrix}$$

$$= \mathbf{x}^T B \mathbf{x} + 2 \mathbf{w}^T \mathbf{x} + d^2$$

Can minimize as before

$$2B\mathbf{x} + 2\mathbf{w} = 0$$

$$\mathbf{x} = -B^{-1}\mathbf{w}$$

Quadratic Error Simplification Algorithm

```
// compute K for each face
for(v : vertices) {
    for(f : faces) {
        Vec4 ve(N, d);
        f->K = outer(ve, ve);
    }
}
```

```
// compute K for each vertex
for(v : vertices)
    for(f : v->faces())
        v->K += f->K;
```

```
// compute K for each edge
// place into priority queue
PriorityQueue pq;
for(e : edge) {
    for(v : e->vertices())
        e->K += v->K;
    pq.push(e->K, e);
}
```

```
// iterate until mesh is a target size
while(faces.length() < target_size) {

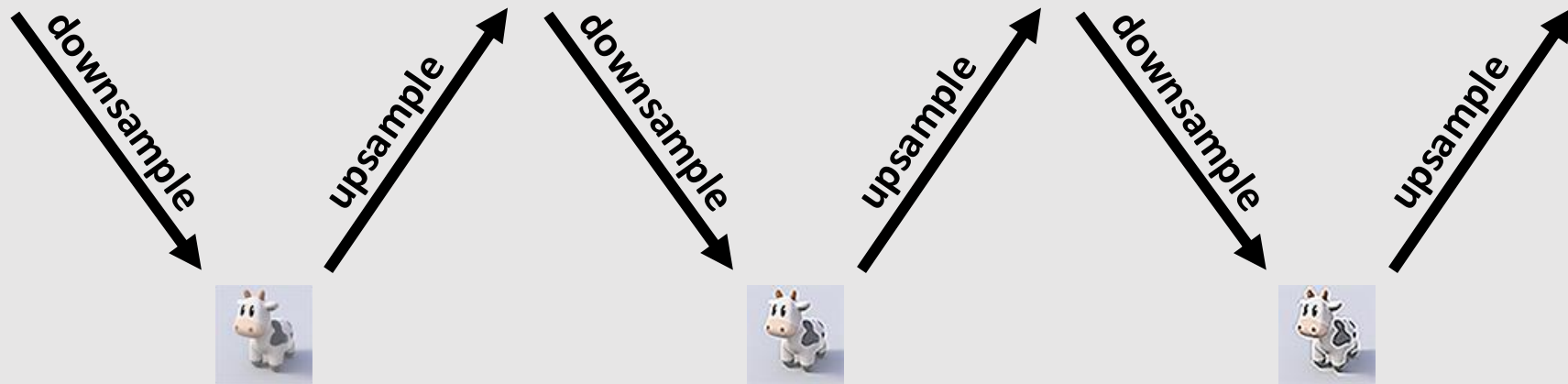
    // collapse edge with smallest cost
    e = pq.pop();
    K = e->K;
    v = collapse(e);

    // position new vertex to optimal pos
    v->pos = -B.inv() * w

    // update K for vertex
    // update K for edges touching vertex
    v->K = K;
    for(e2 : v->edges()) {
        e2->K = 0
        for(v2 : e2->vertices())
            e2->K += v2->K;
    }
}
```

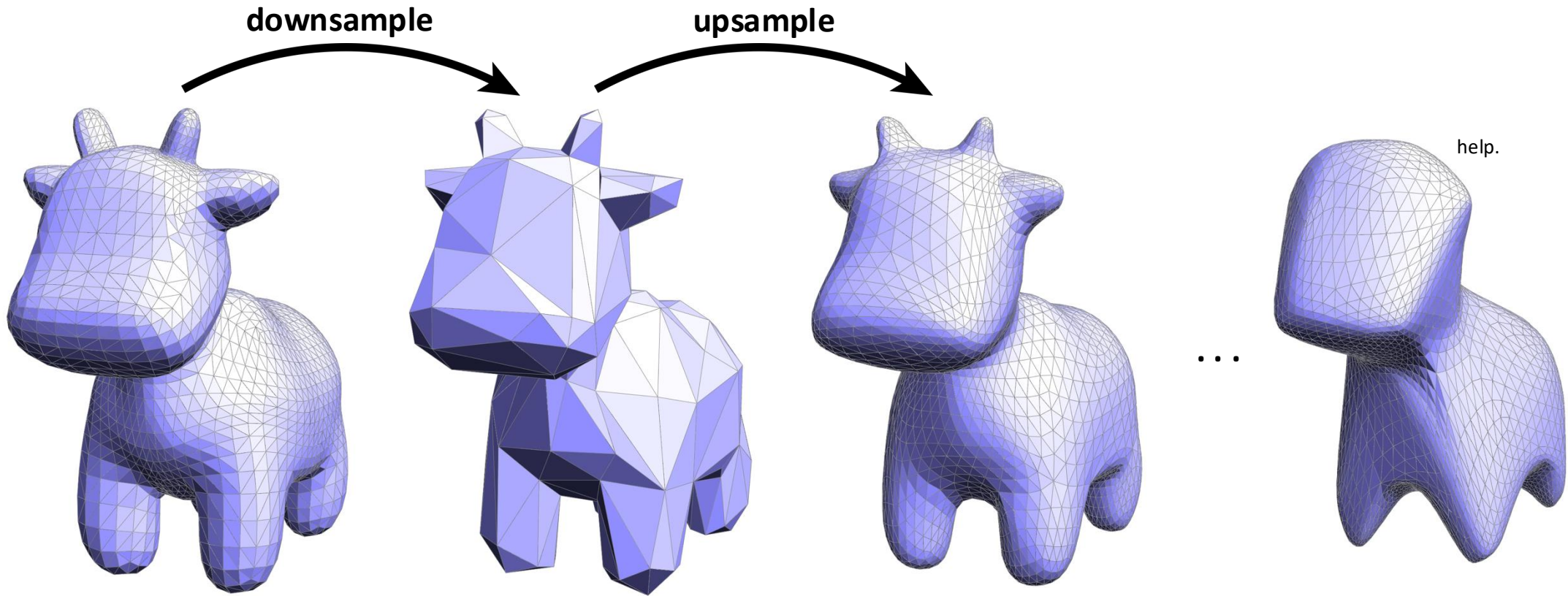
Is simplification the inverse operation of subdivision?

Dangers of Resampling



Repeatedly resampling an image degrades signal quality!

Dangers of Resampling



Repeatedly resampling a mesh also degrades signal quality!

- ~~Good Geometry~~

- ~~Geometric Subdivision~~

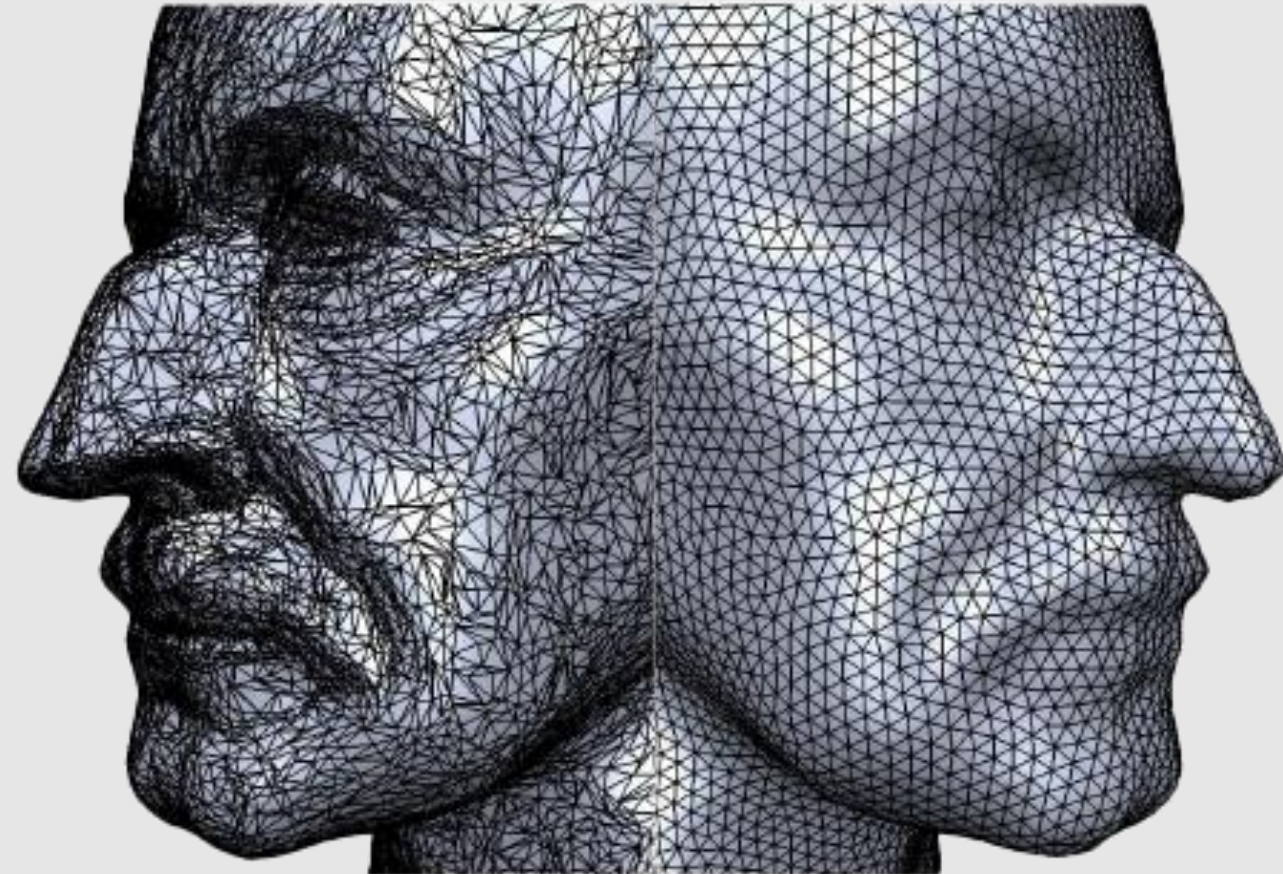
- ~~Geometric Simplification~~

- Geometric Remeshing

- Geometric Queries

Isotropic Remeshing

- **Isotropic:** same value when measured in any direction
- **Remeshing:** a change in the mesh
 - **Goal:** change the mesh to make triangles more uniform shape and size
- Helps achieve good mesh properties:
 - Good approximation of original shape
 - Vertex degrees close to 6
 - Angles close to 60deg
 - Delaunay triangles

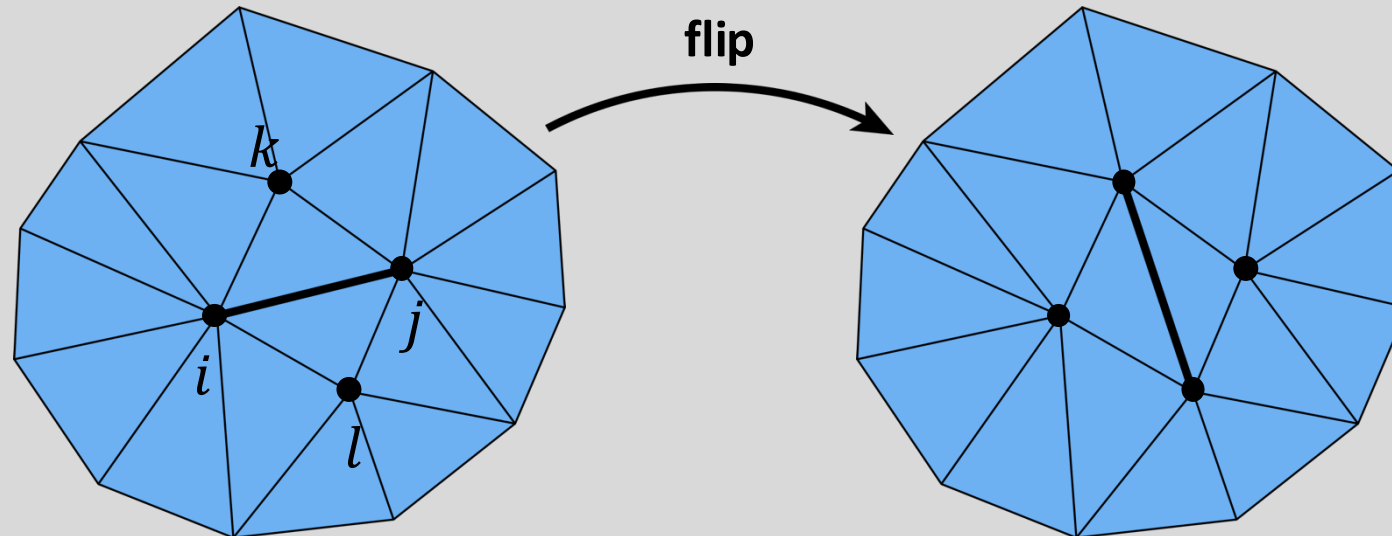


Improving Degree

Vertices with degree 6 makes triangles more regular

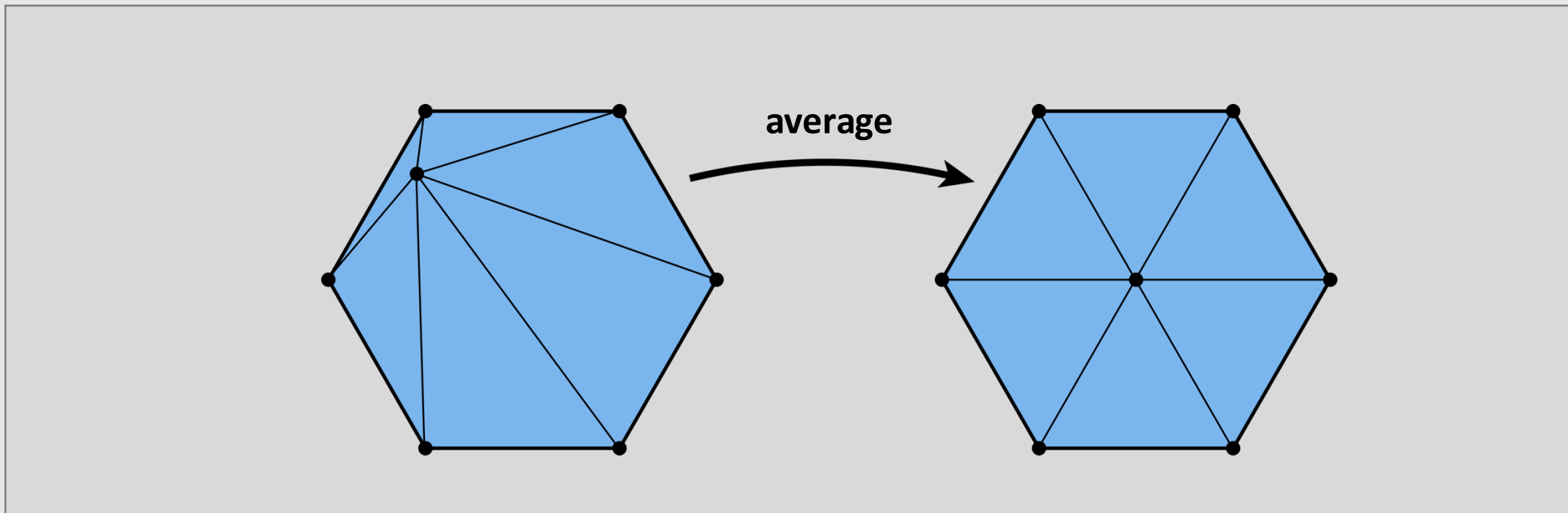
Deviation function: $|d_i - 6| + |d_j - 6| + |d_k - 6| + |d_l - 6|$

If flipping an edge reduces deviation function, flip edge



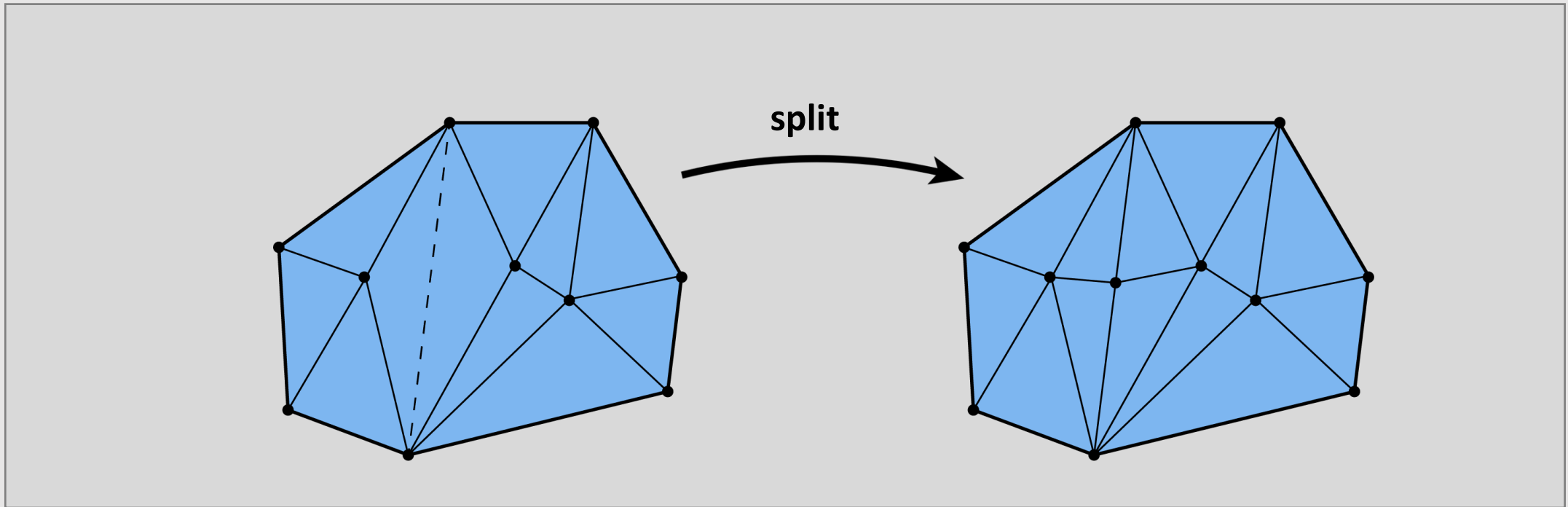
Improving Vertex Positioning

Center vertices to make triangles more even in size



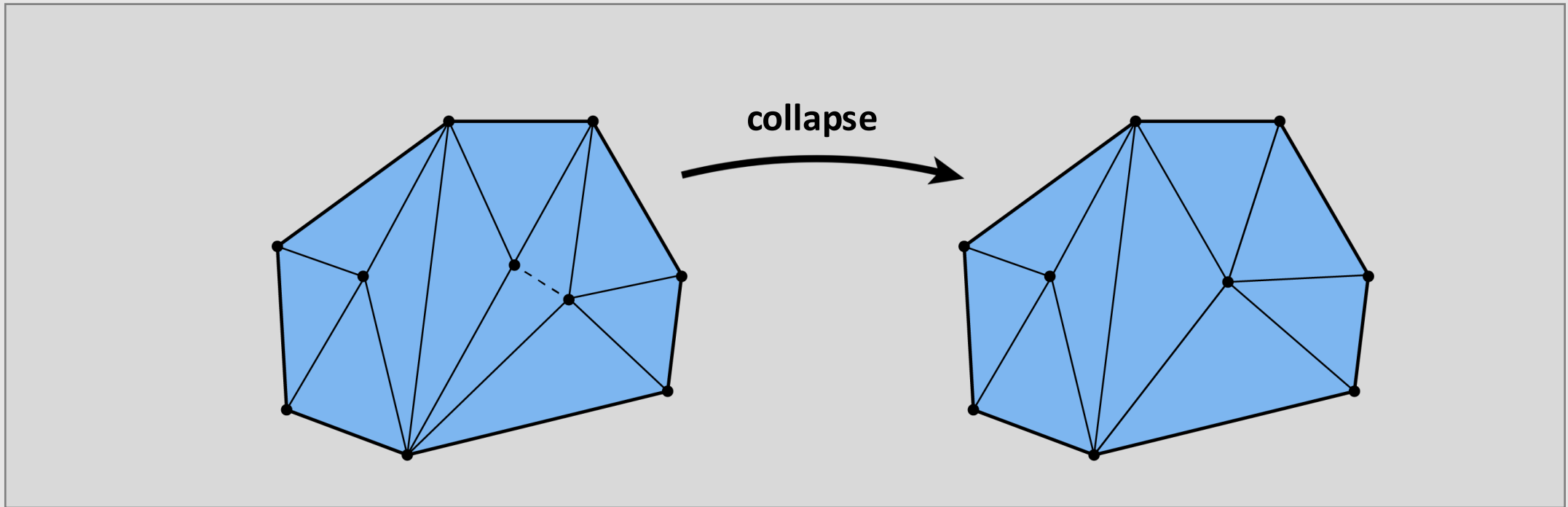
Improving Edge Length

If an edge is longer than $(4/3 * \text{mean})$ length, split it

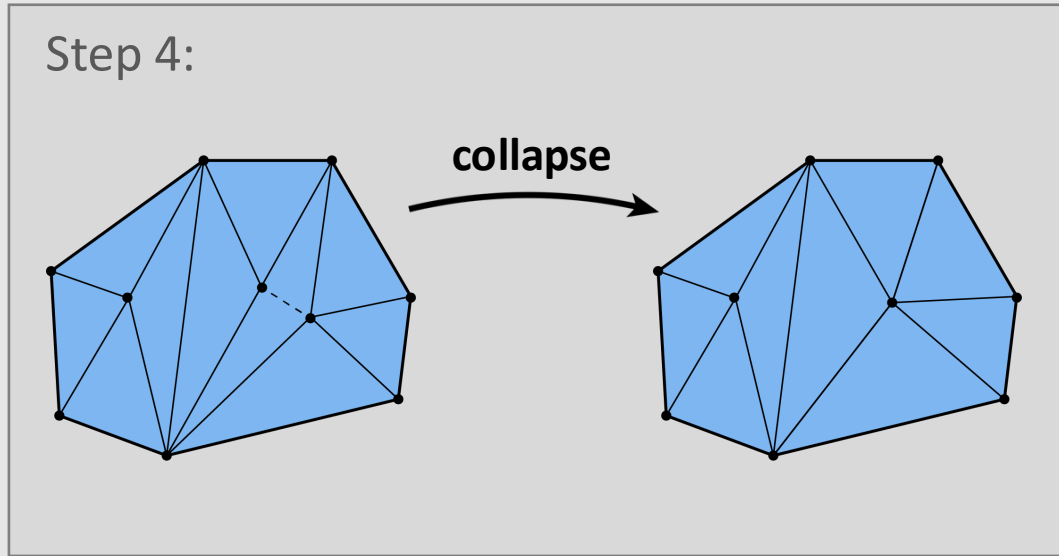
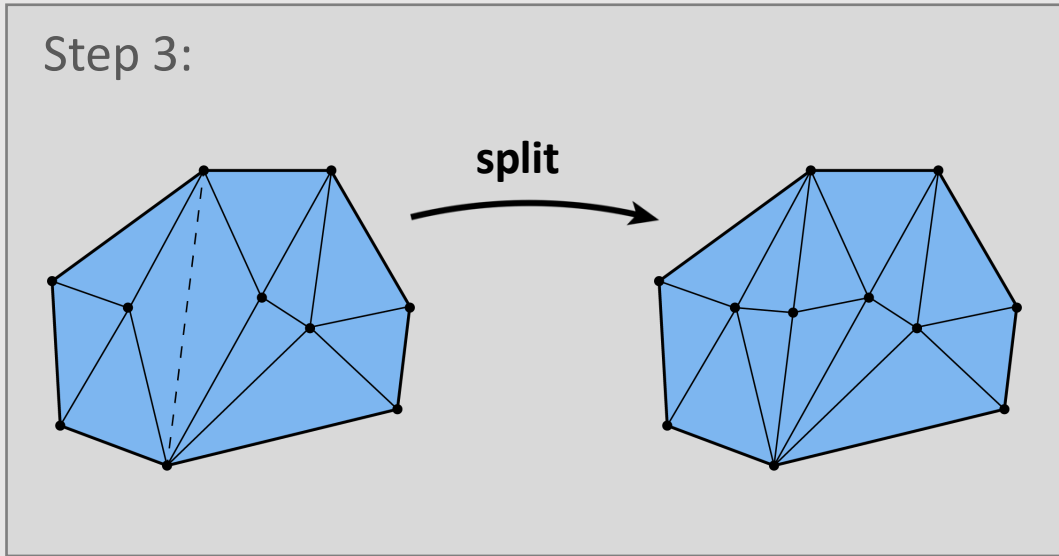
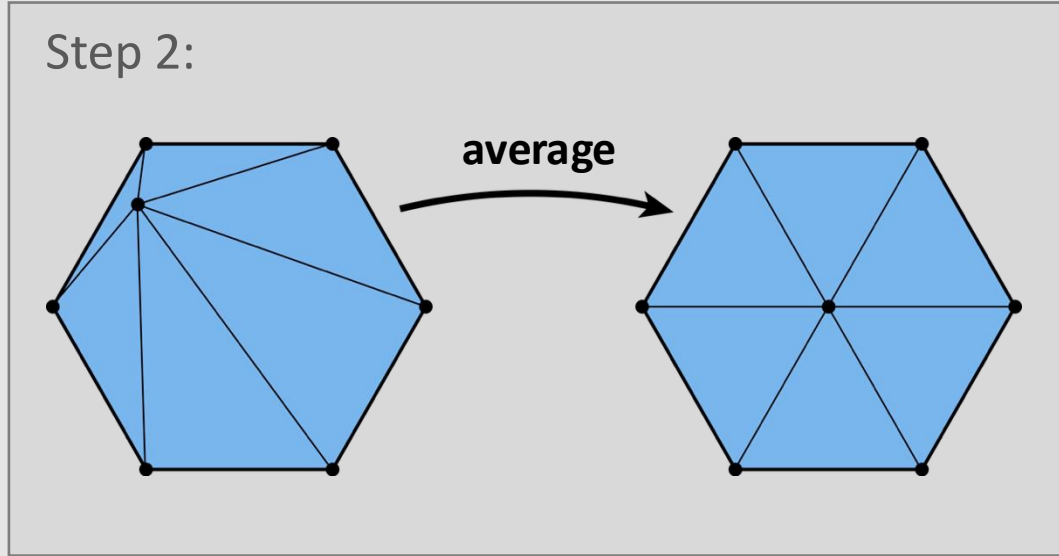
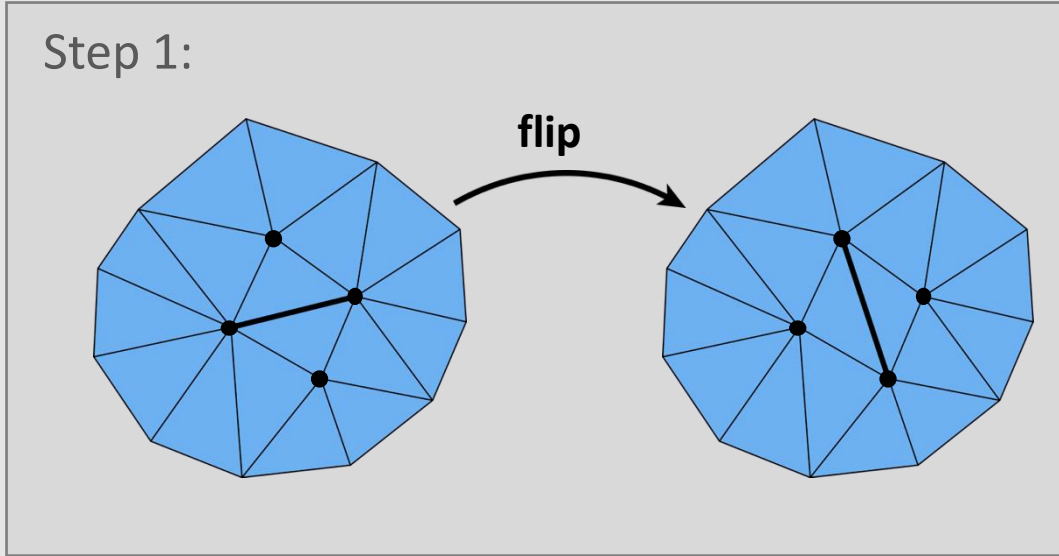


Improving Edge Length

If an edge is shorter than $(4/5 * \text{mean})$ length, collapse it



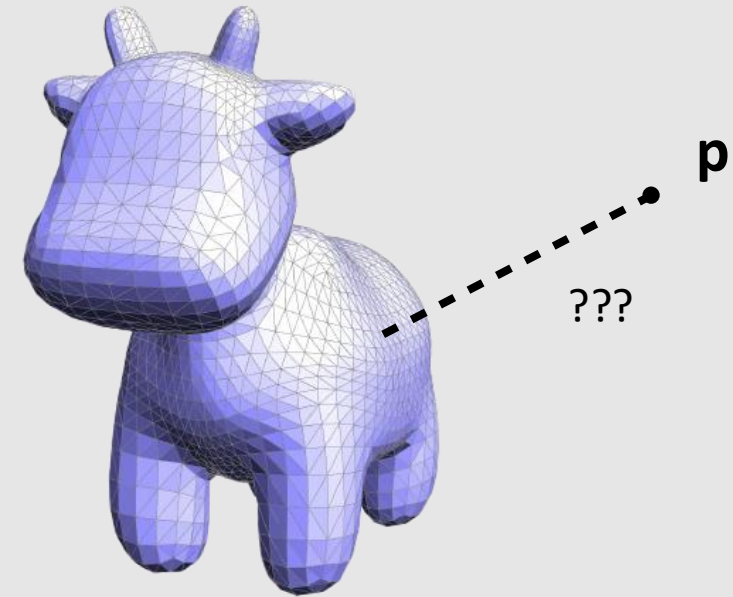
Isotropic Remeshing



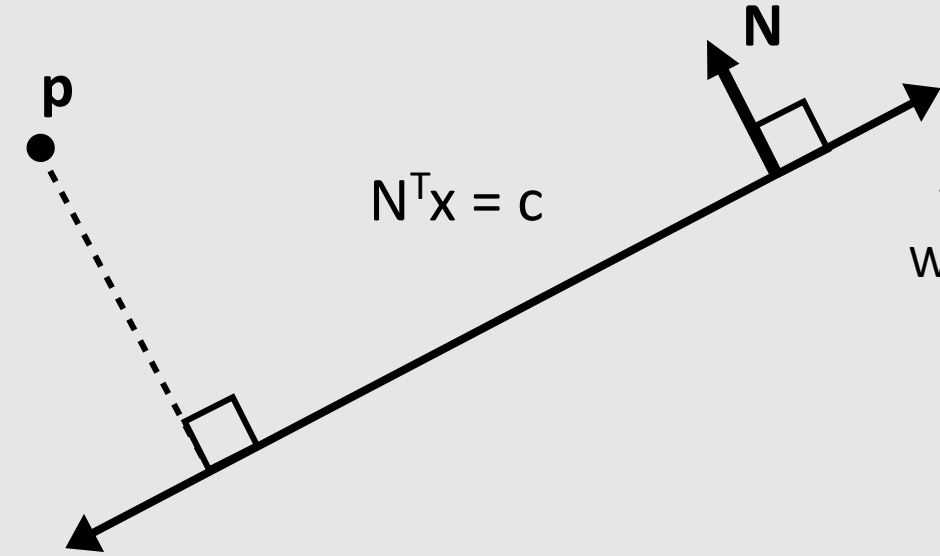
- ~~Good Geometry~~
- ~~Geometric Subdivision~~
- ~~Geometric Simplification~~
- ~~Geometric Remeshing~~
- Geometric Queries

Closest Point Queries

- **Problem:** given a point, in how do we find the closest point on a given surface?
- Several use cases:
 - Ray/mesh intersection in pathtracing
 - Kinematics/animation
 - GUI/user selection
 - When I click on a mesh, what point am I actually clicking on?



Closest Point on a Line



To find the closest point to p along $N^T x = c$
We can have p travel along N for some time t

$$N^T(p + tN) = c$$

Multiplying the terms out

$$N^T p + tN^T N = c$$

The unit norm multiplied by itself is 1

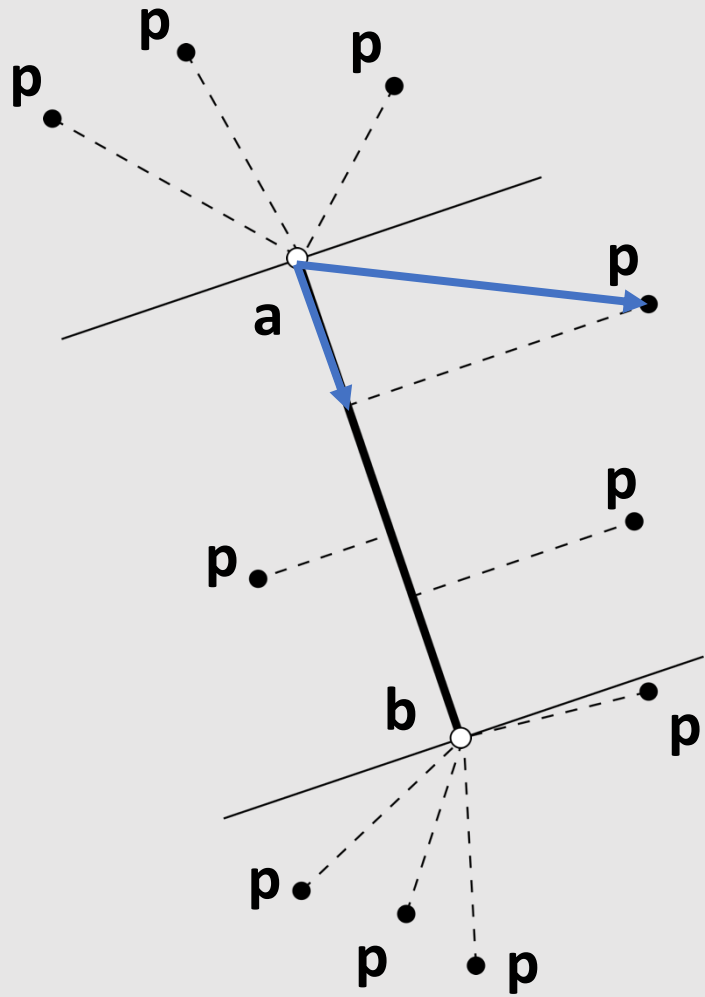
Solve for t

$$t = c - N^T p$$

Propagate p along N for time t

$$p + tN$$
$$p + (c - N^T p)N$$

Closest Point on a Line Segment



Compute the vector \mathbf{p} from the line base \mathbf{a} along the line

$$\langle \mathbf{p} - \mathbf{a}, \mathbf{b} - \mathbf{a} \rangle$$

Normalize to get a time

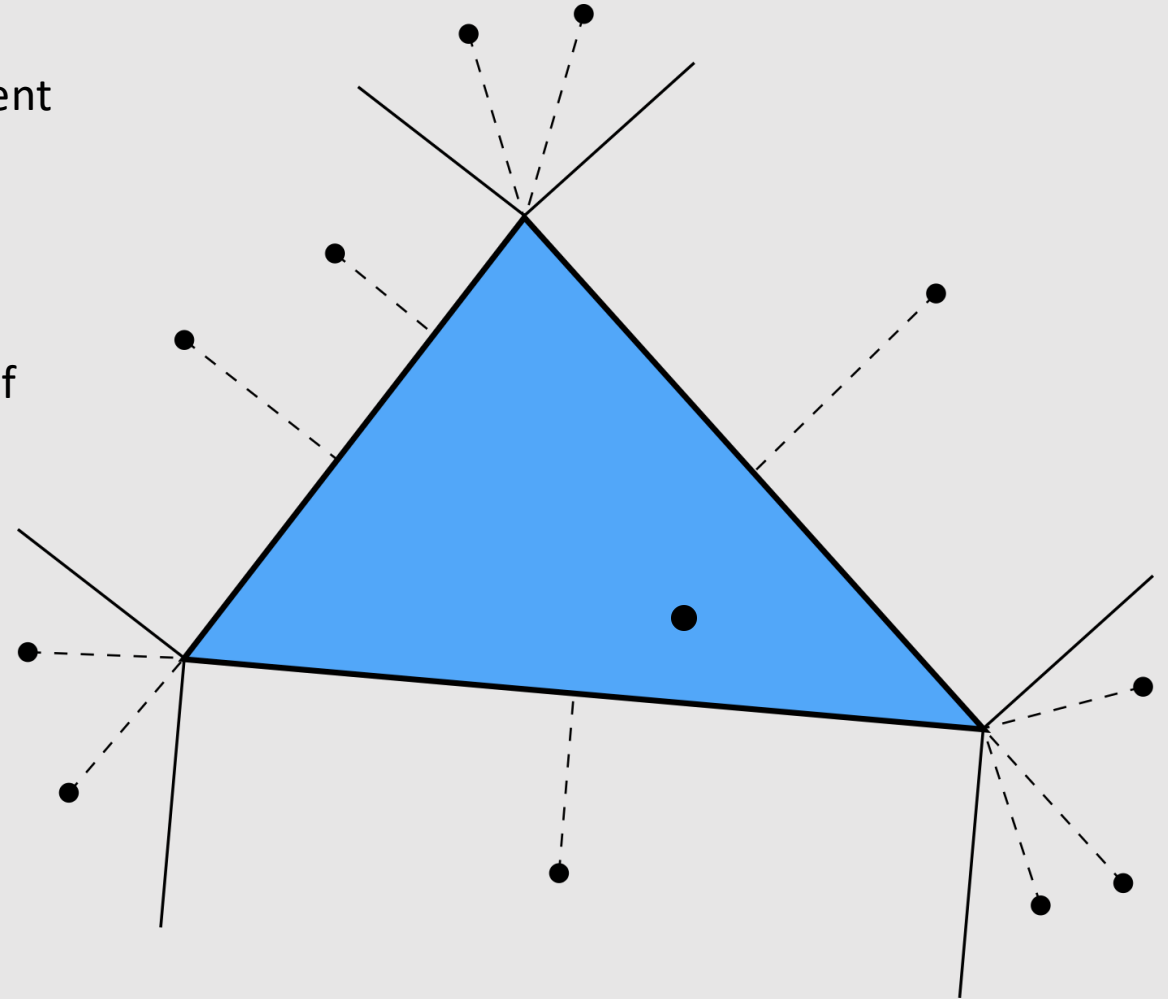
$$t = \frac{\langle \mathbf{p} - \mathbf{a}, \mathbf{b} - \mathbf{a} \rangle}{\langle \mathbf{b} - \mathbf{a}, \mathbf{b} - \mathbf{a} \rangle}$$

Clip time to range $[0,1]$ and interpolate

$$\mathbf{a} + (\mathbf{b} - \mathbf{a})t$$

Closest Point on a 2D Triangle

- Easy! Just compute closest point to each line segment
 - For each point, compute distance
 - Point with smallest distance wins
- What if the point is inside the triangle?
 - Even easier! The closest point is the point itself
 - Recall point-in-triangle tests



Closest Point on a 3D Triangle

- **Method #1: Projection****
 - Construct a plane that passes through the triangle
 - Can be done using cross product of edges
 - Project the point to the closest point on the plane
 - Same expression as with a line: $p + (c - N^T p)N$
 - Check if point is in triangle using half-plane test
 - Else, compute distance from each line segment in 3D
 - Same expression as with a 2D line segment
- **Method #2: Rotation****
 - Translate point + triangle so that triangle vertex v1 is at the origin
 - Rotate point + triangle so that triangle vertex v2 sits on the z-axis
 - Rotate point + triangle so that triangle vertex v3 sits on the yz-axis
 - Disregard x-coordinate of point
 - Problem reduces to closest point on 2D triangle

**<https://citeseerx.ist.psu.edu/viewdoc/download?doi=10.1.1.104.4264&rep=rep1&type=pdf>

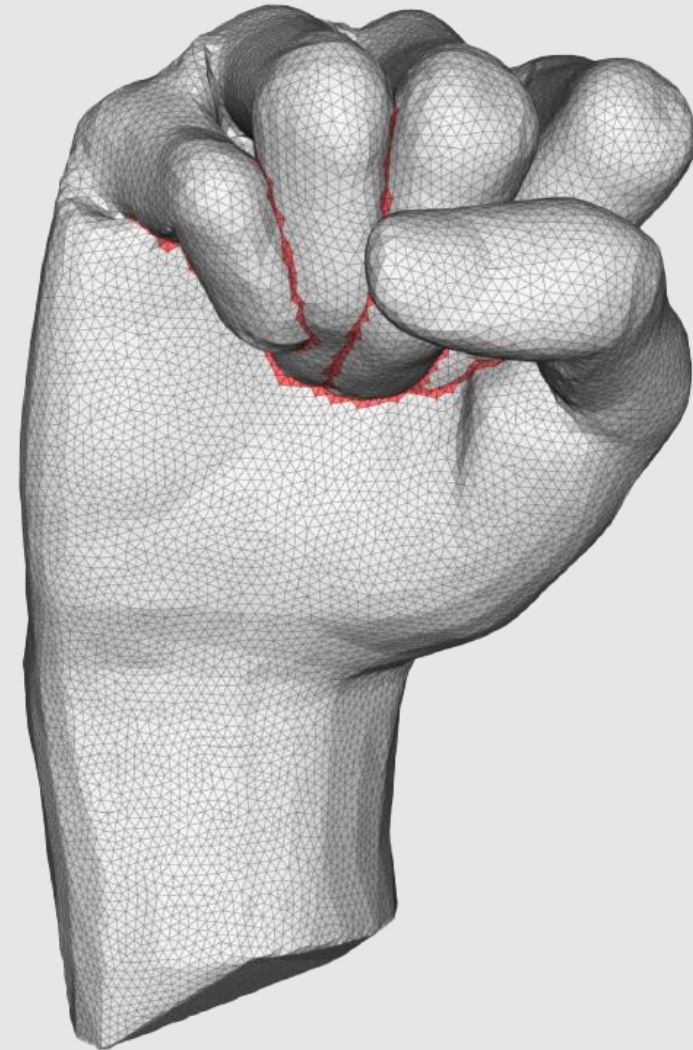
Closest Point on a 3D Triangle Mesh

- Conceptually easy!
 - Loop over every triangle
 - Compute closest point to current triangle
 - Keep track of globally closest point
- Not practical in real world
 - Meshes have billions of triangles
 - Programs make thousands of geometric queries a second
- Will look at better solutions next time

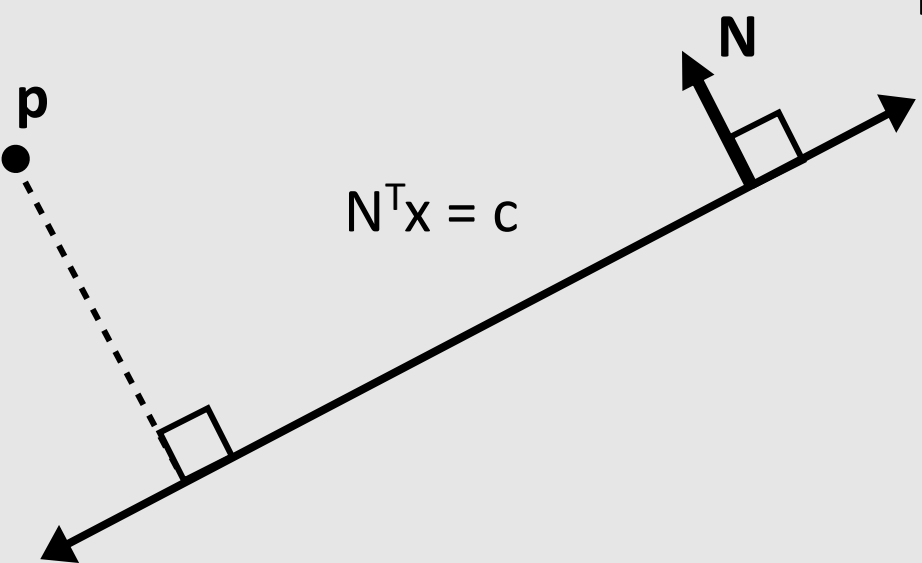


Mesh-Mesh Intersections

- Sometimes when editing geometry, a mesh will intersect with itself
- Likewise, sometimes when animating geometry, meshes will collide
- How do we check for/prevent collisions?



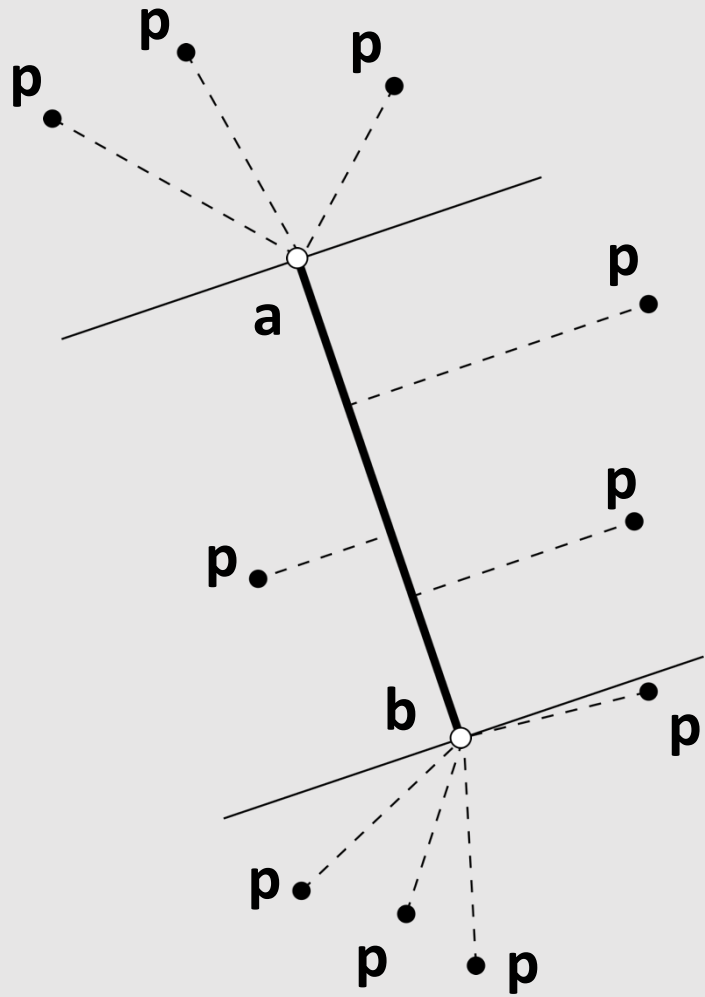
Point-Line Intersection



Just plug point in

$$N^T p = c?$$

Point-Line Segment Intersection



Check if adding distances equals net distance**

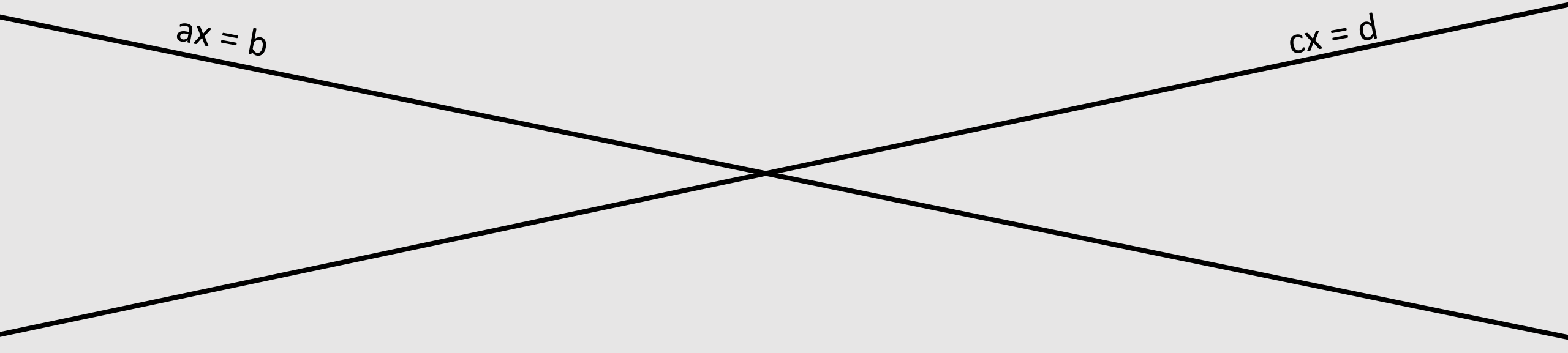
$$\text{dist}(a, p) + \text{dist}(p, b) = \text{dist}(a, b)$$

**Potential numeric stability issues

Line-Line Intersection

Two equations, two unknowns
Solve a linear system

$$\begin{bmatrix} a_1 & a_2 \\ c_1 & c_2 \end{bmatrix} \begin{bmatrix} x_1 \\ x_2 \end{bmatrix} = \begin{bmatrix} b \\ d \end{bmatrix}$$



$ax = b$

$cx = d$

Point-Triangle Intersection

You know this :)

